

# STRYA SEVEN DEPARTURE (RNAV)

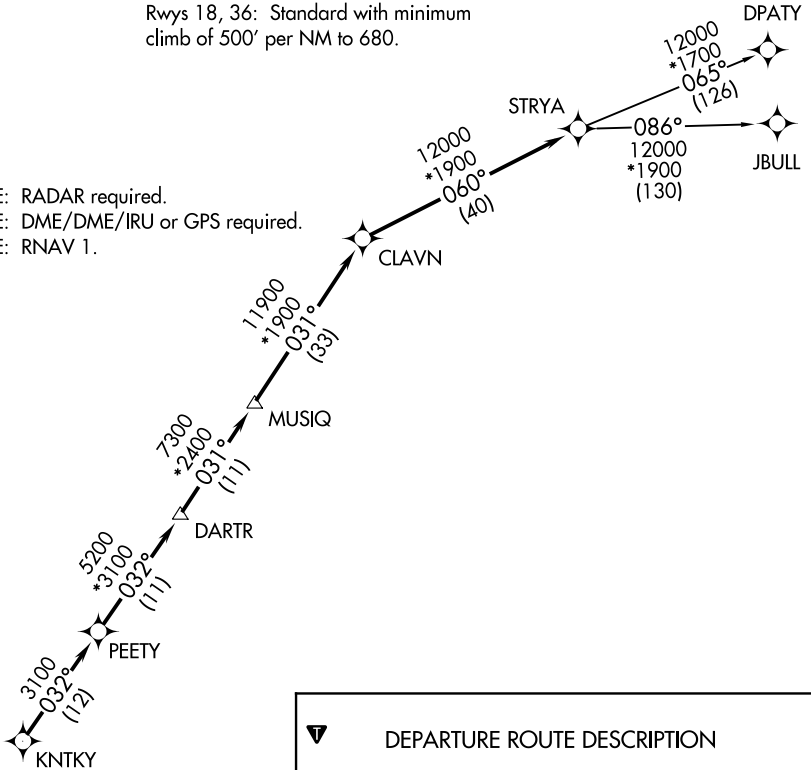
ATIS  
119.525  
CTAF  
126.975  
CLNC DEL  
132.075  
HOUSTON DEP CON  
123.8 257.7

**TOP ALTITUDE: ASSIGNED BY ATC**

### TAKEOFF MINIMUMS

Rwys 18, 36: Standard with minimum climb of 500' per NM to 680.

- NOTE: RADAR required.
- NOTE: DME/DME/IRU or GPS required.
- NOTE: RNAV 1.



**▼ DEPARTURE ROUTE DESCRIPTION**

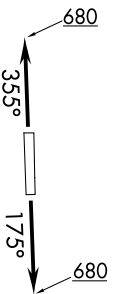
TAKEOFF RWY 18: Climb heading 175° to 680 for RADAR vectors to KNTKY, thence . . . .

TAKEOFF RWY 36: Climb heading 355° to 680 for RADAR vectors to KNTKY, thence . . . .

. . . . on track 032° to PEETY, then on track 032° to DARTR, then on track 031° to MUSIQ, then on track 031° to CLAVN, then on track 060° to STRYA, then on (transition). Maintain ATC assigned altitude. Expect filed altitude 10 minutes after departure.

DPATY TRANSITION (STRYA7.DPATY)

JBULL TRANSITION (STRYA7.JBULL)



NOTE: Chart not to scale.

SC-5, 30 JAN 2020 to 27 FEB 2020

SC-5, 30 JAN 2020 to 27 FEB 2020