

(BLTWY6.BLTWY) 19115

# BLTWY SIX DEPARTURE (RNAV)

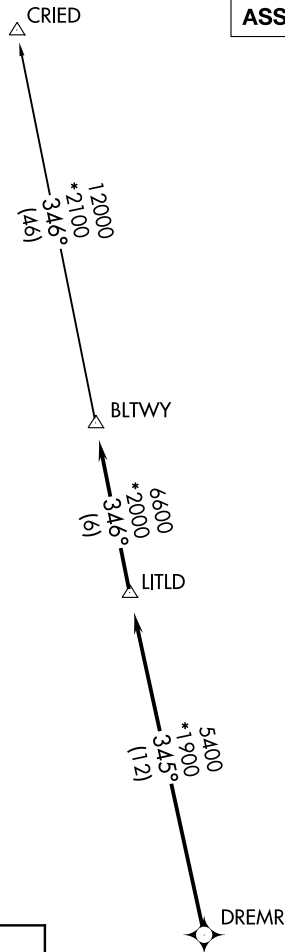
AL-10328 (FAA)

HOUSTON EXECUTIVE (TME)

HOUSTON, TEXAS

ATIS  
119.525  
CLNC DEL  
132.075  
EXECUTIVE TOWER \*  
126.975 (CTAF)  
HOUSTON DEP CON  
123.8 257.7

**TOP ALTITUDE:  
ASSIGNED BY ATC**



NOTE: RADAR required.  
NOTE: DME/DME/IRU or GPS required.  
NOTE: RNAV 1.

TAKEOFF MINIMUMS  
Rwy 18, 36: Standard with minimum climb of 500' per NM to 680.

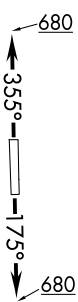
**▼ DEPARTURE ROUTE DESCRIPTION**

TAKEOFF RWY 18: Climb heading 175° to 680 for RADAR vectors to DREMR, thence . . . .

TAKEOFF RWY 36: Climb heading 355° to 680 for RADAR vectors to DREMR, thence . . . .

...on track 345° to LITLD, then on track 346° to BLTWY, then on (transition). Maintain ATC assigned altitude. Expect filed altitude 10 minutes after departure.

CRIED TRANSITION (BLTWY6.CRIED)



NOTE: Chart not to scale.

# BLTWY SIX DEPARTURE (RNAV)

(BLTWY6.BLTWY) 25APR19

HOUSTON, TEXAS  
HOUSTON EXECUTIVE (TME)

SC-5, 30 JAN 2020 to 27 FEB 2020

SC-5, 30 JAN 2020 to 27 FEB 2020