

APP CRS <b>267°</b>	Rwy Idg <b>2627</b>
	TDZE <b>545</b>
	Apt Elev <b>545</b>

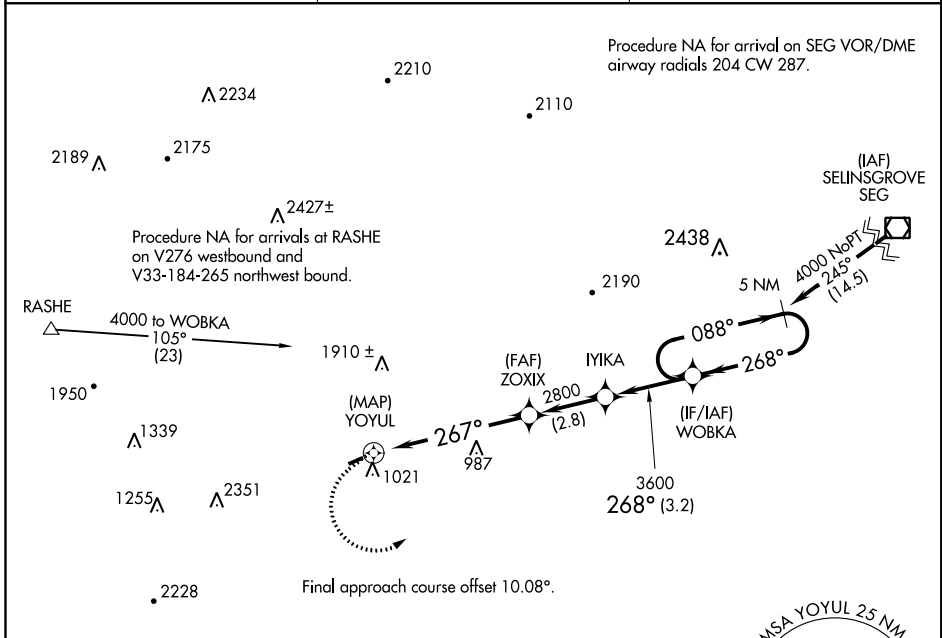
# RNAV (GPS) RWY 26

MIFFLINTOWN (P34)

**▼** Rwy 26 helicopter visibility reduction below 1 SM NA. DME/DME RNP-0.3 NA.  
**▲ NA** Procedure NA at night. Use Penn Valley altimeter setting, if not received, use Reedsville altimeter setting and increase all MDAs 240 feet.

**MISSED APPROACH:** Climbing left turn to 4000 direct WOBKA and hold.

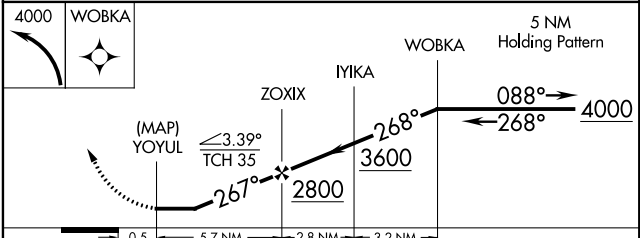
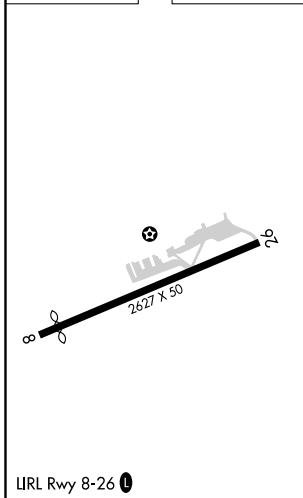
SEG ASOS <b>123.975</b>	NEW YORK APP CON <b>134.8 338.3</b>	UNICOM <b>122.8 (CTAF)</b>
----------------------------	--	-------------------------------



NE-4, 30 JAN 2020 to 27 FEB 2020

NE-4, 30 JAN 2020 to 27 FEB 2020

ELEV 545	TDZE 545
----------	----------



CATEGORY	A	B	C	D
LNAV MDA	1440-1¼	895 (900-1¼)	NA	
CIRCLING	1560-1¼ 1015 (1100-1¼)	1640-1½ 1095 (1100-1½)	NA	