

VOR/DME SJC 114.1 Chan 88	APP CRS 286°	Rwy Idg TDZE Apt Elev	2443 7 7
---	------------------------	-----------------------------	-------------------------------------

VOR RWY 31

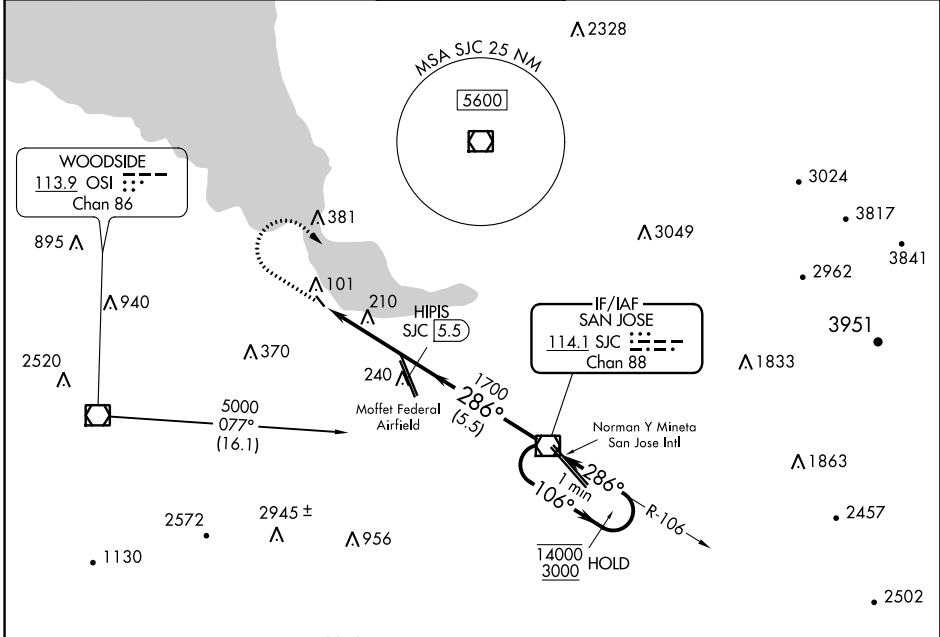
PALO ALTO (PAO)

DME Required

⚠ Circling NA southwest of Rwy 13-31. Rwy 31 helicopter visibility reduction below 1 SM NA. When control tower closed, use Norman Y Mineta San Jose Intl altimeter setting and increase all MDAs 40 feet. Procedure NA at night.

MISSED APPROACH: Climb to 1000 then climbing right turn to 3000 direct SJC VOR/DME and hold.

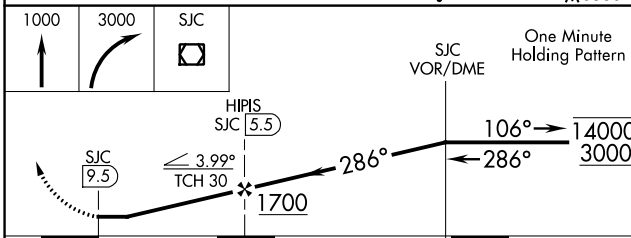
ATIS 135.275	NORCAL APP CON 121.3 270.35	PALO ALTO TOWER* 118.6 (CTAF)	GND CON 125.0	UNICOM 122.95
------------------------	---------------------------------------	--	-------------------------	-------------------------



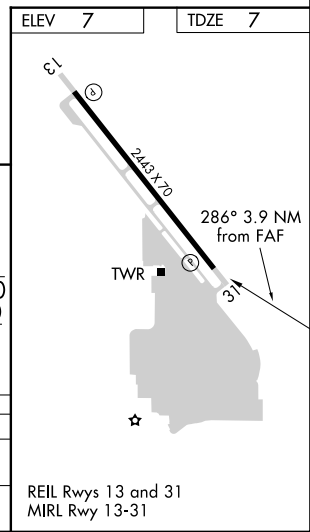
SW-2, 30 JAN 2020 to 27 FEB 2020

SW-2, 30 JAN 2020 to 27 FEB 2020

ELEV 7	TDZE 7
--------	--------



CATEGORY	A	B	C	D
S-31	480-1	473 (500-1)		NA
C CIRCLING	480-1 473 (500-1)	520-1 513 (600-1)		NA



REIL Rws 13 and 31
MIRL Rwy 13-31