

WAAS CH 82336 W33A	APP CRS 333°	Rwy Idg 2630 TDZE 147 Apt Elev 147
--	------------------------	---

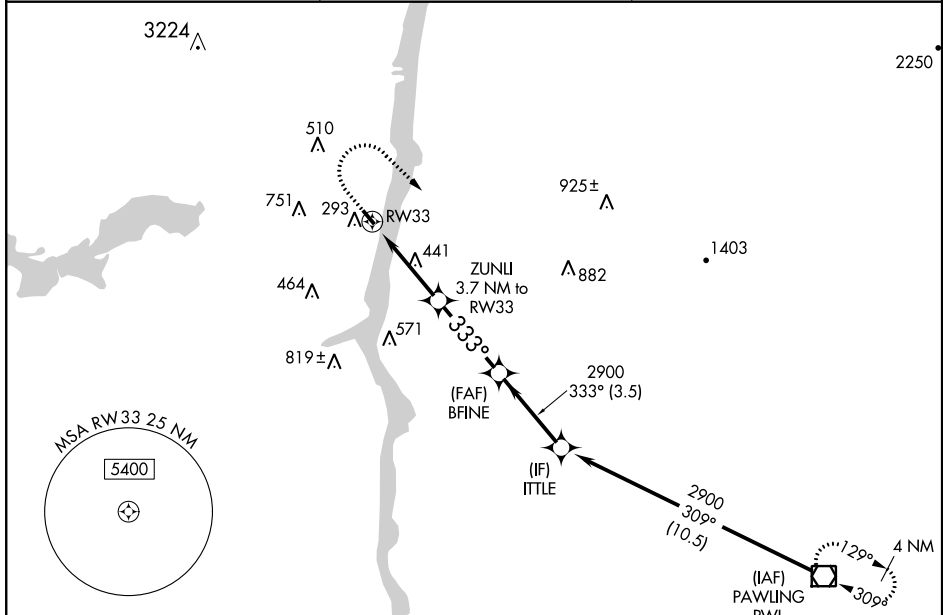
RNAV (GPS) RWY 33

KINGSTON-ULSTER (20N)

RNP APCH. **NA** Use Hudson altimeter setting. When not received, use Newburgh altimeter setting and increase all MDA 60 feet. Baro-VNAV NA. Rwy 33 helicopter visibility reduction below 1 SM NA. Straight-in Rwy 33 at night operational VGSI required, remain on or above VGSI glidepath until threshold. Circling Rwy 15 NA at night.

MISSED APPROACH: Climb to 600, then climbing right turn to 3000 direct PWL VOR/DME and hold.

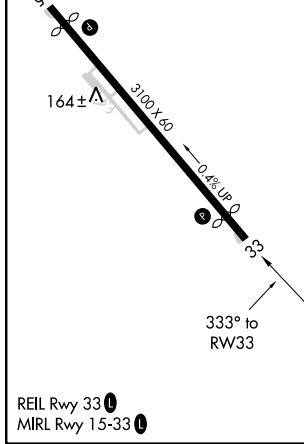
NEW YORK APP CON 132.75 363.1	UNICOM 122.8 (CTAF)	123.3
---	-------------------------------	--------------



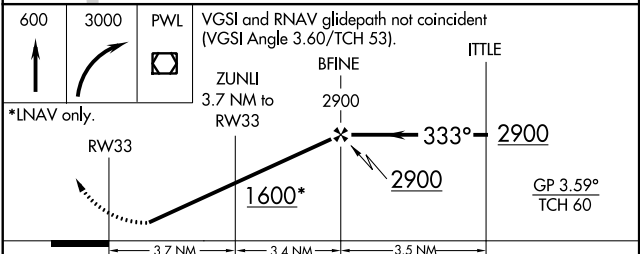
NE-2, 30 JAN 2020 to 27 FEB 2020

NE-2, 30 JAN 2020 to 27 FEB 2020

ELEV 147	D	TDZE 147
----------	----------	----------



Procedure NA for arrivals on PWL VOR/DME airway radials 250 CW 354.



CATEGORY	A	B	C	D
LPV DA	499-1	352 (400-1)		NA
LNAV/VNAV DA	635-1 3/8	489 (500-1 3/8)		NA
LNAV MDA	880-1 733 (800-1)	880-1 1/4 733 (800-1 1/4)		NA
C CIRCLING	880-1 733 (800-1)	960-1 1/4 813 (900-1 1/4)		NA