

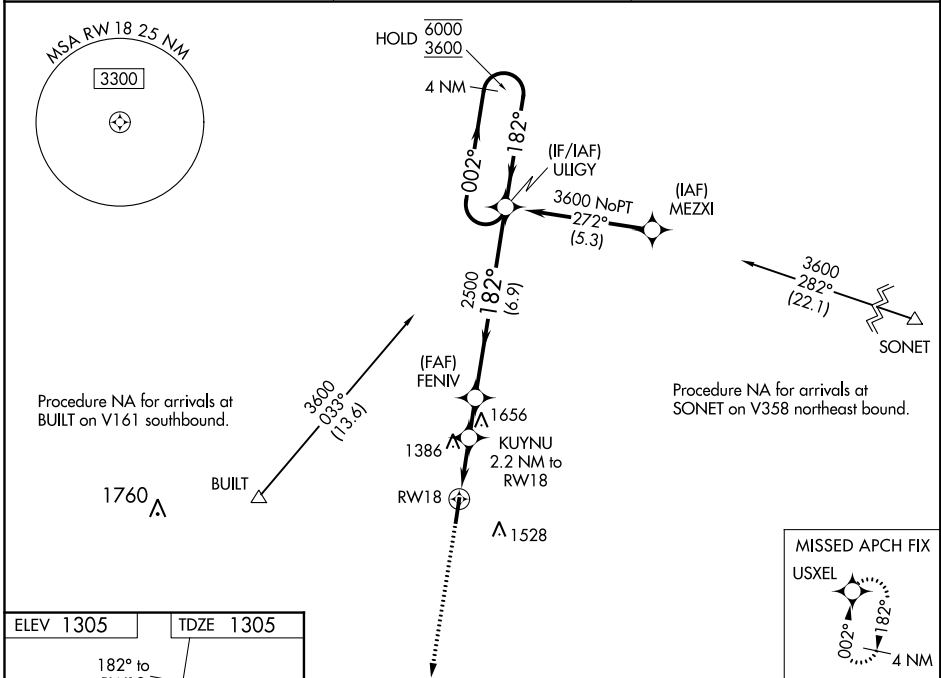
WAAS CH <b>72629</b> <b>W18A</b>	APP CRS <b>182°</b>	Rwy Idg TDZE <b>1305</b> Apt Elev <b>1305</b>	<b>4998</b>
----------------------------------------	------------------------	-----------------------------------------------------	-------------

# RNAV (GPS) RWY 18

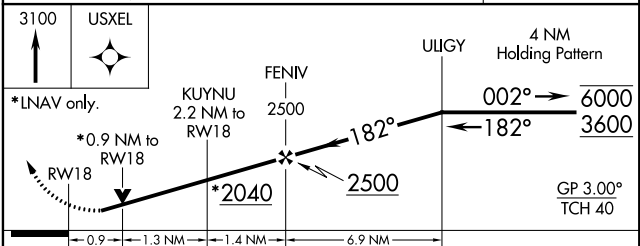
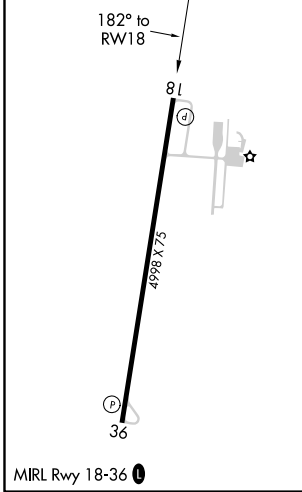
HAMILTON MUNI (MNZ)

RNP APCH.	MISSED APPROACH: Climb to 3100 direct USXEL and hold.
▼ Rwy 18 helicopter visibility reduction below 3/4 SM NA. For uncompensated Baro-VNAV systems, LNAV/VNAV NA below -17°C or above 54°C.	

AWOS-3 <b>118.525</b>	GRAY APP CON <b>120.075 323.15</b>	UNICOM <b>122.7 (CTAF)</b>
--------------------------	---------------------------------------	-------------------------------



ELEV 1305	TDZE 1305
-----------	-----------



CATEGORY	A	B	C	D
LPV DA		1555-1	250 (300-1)	NA
LNAV/VNAV DA		1555-1	250 (300-1)	NA
LNAV MDA		1640-1	335 (400-1)	NA
CIRCLING	1680-1 375 (400-1)	1760-1 455 (500-1)	1900-1½ 595 (600-1½)	NA

SC-3, 30 JAN 2020 to 27 FEB 2020

SC-3, 30 JAN 2020 to 27 FEB 2020