

| | | |
|-------------|----------|-------------|
| APP CRS | Rwy Idg | 5000 |
| 138° | TDZE | 988 |
| | Apt Elev | 989 |

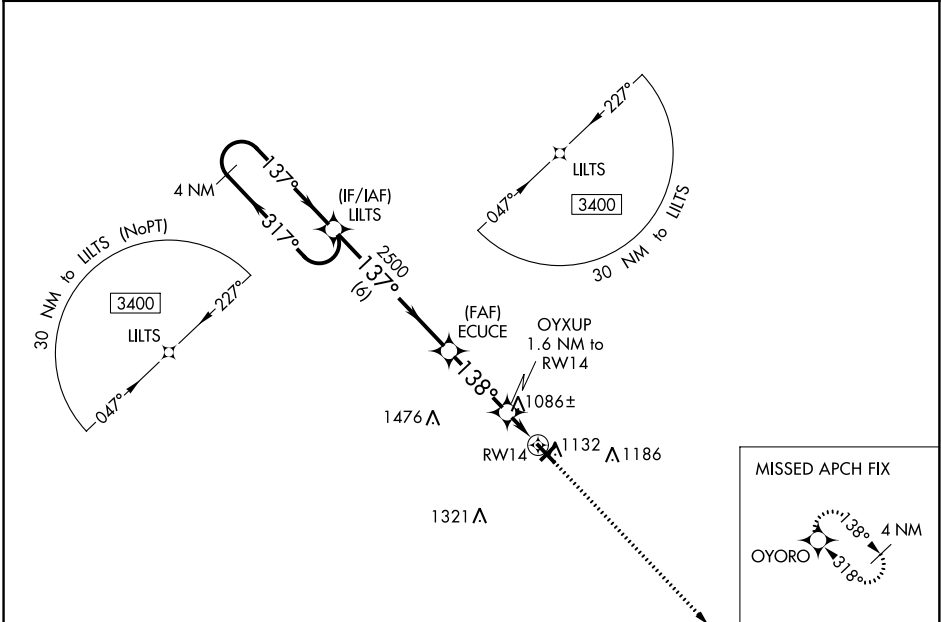
RNAV (GPS) RWY 14

BURNETT COUNTY (RZN)

▼ DME/DME RNP-0.3 NA. VDP NA with Rush City, MN altimeter setting.
▲ When local altimeter setting not received, use Rush City, MN altimeter setting and increase all MDA 80 feet; increase LNAV Cat C/D visibility and Circling Cat C/D visibility ¼ mile. Helicopter visibility reduction below ¾ SM NA. Night landing: Rwy 5, 23, 32 NA.

MISSED APPROACH:
 Climb to 3400 direct OYORO and hold.

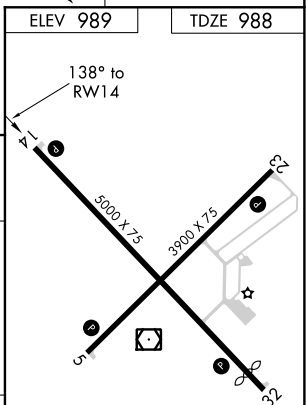
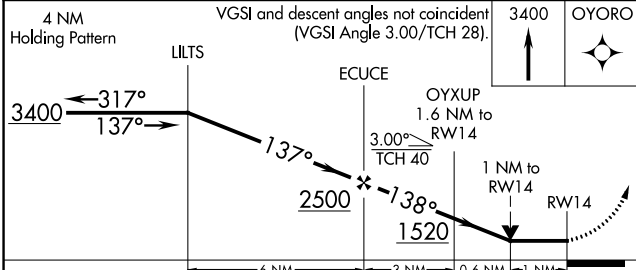
| | | |
|--------------------------|---|---------------------------------|
| AWOS-3 118,325 | MINNEAPOLIS CENTER 121.05 397.9 | UNICOM 122.8 (CTAF) ☺ |
|--------------------------|---|---------------------------------|



EC-3, 30 JAN 2020 to 27 FEB 2020

EC-3, 30 JAN 2020 to 27 FEB 2020

| | |
|-----------|----------|
| ELEV 989 | TDZE 988 |
| 1615 ▲ | |



| | | | | |
|-------------------|--------------------|----------------------|----------------------|---|
| CATEGORY | A | B | C | D |
| LNAV MDA | 1340-1 352 (400-1) | | | |
| ☑ CIRCLING | 1440-1 451 (500-1) | 1540-1½ 551 (600-1½) | 1680-2¼ 691 (700-2¼) | |

REIL Rwys 5, 14, 23 and 32 ☺
 MIRL Rwys 5-23 and 14-32 ☺