

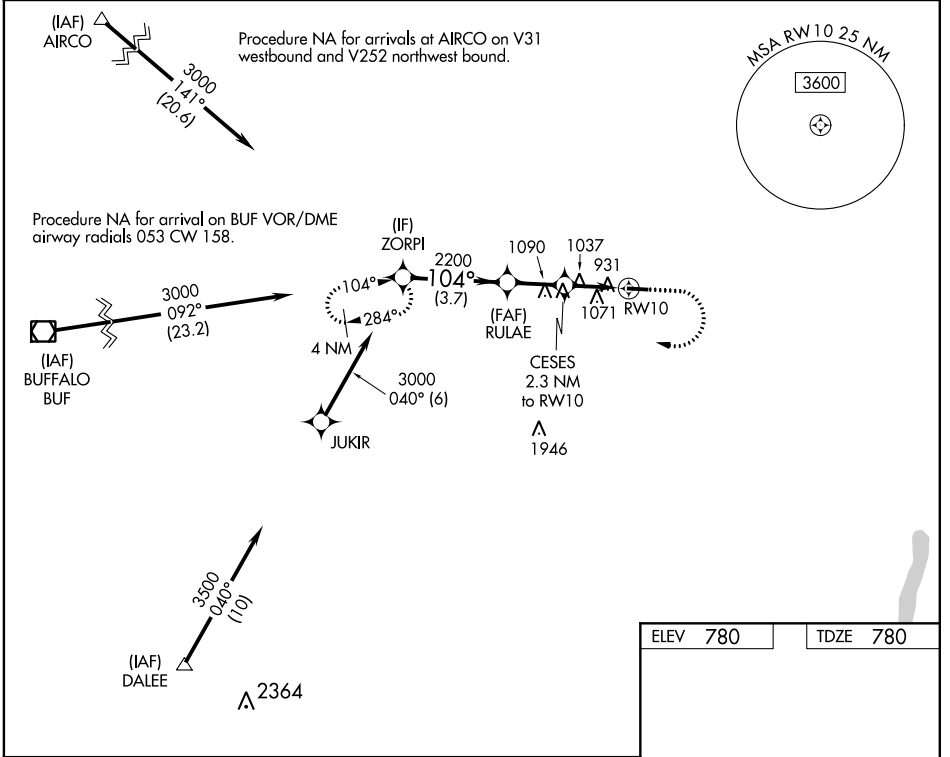
WAAS CH 61030 W10A	APP CRS 104°	Rwy Idg TDZE Apt Elev	3854 780 780
--	------------------------	-----------------------------	---

RNAV (GPS) RWY 10

LE ROY (5G0)

RNP APCH.		MISSED APPROACH: Climb to 1500 then climbing right turn to 3000 direct ZORPI and hold.
<p>Procedure NA at night. Rwy 10 helicopter visibility reduction below 1 SM NA. Procedure NA for arrivals at AIRCO on V31 westbound and V252 northwest bound.</p>		

ROC ASOS 124.825	ROCHESTER APP CON 123.7 322.3	UNICOM 122.8 (CTAF) 0
----------------------------	---	---------------------------------



NE-2, 30 JAN 2020 to 27 FEB 2020

NE-2, 30 JAN 2020 to 27 FEB 2020

ELEV 780		TDZE 780	
ZORPI		ZORPI	
3000		3000	
104°		104° to RW10	
RULAE		RULAE	
2200		2200	
3.00° TCH 31		3.00° TCH 31	
1540		1540	
RW10		RW10	
3.7 NM		2.1 NM	
2.3 NM		2.3 NM	
CATEGORY	A	B	D
LP MDA	1360-1	580 (600-1)	NA
INAV MDA	1400-1	620 (700-1)	NA
MIRL Rwy 10-28 0		REIL Rwy 10 and 28 0	