

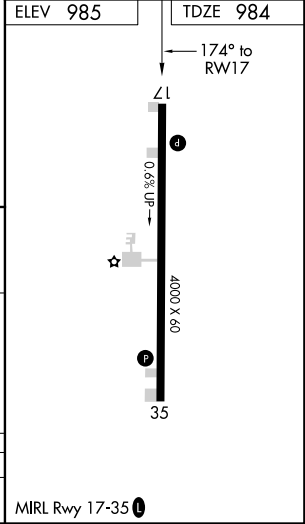
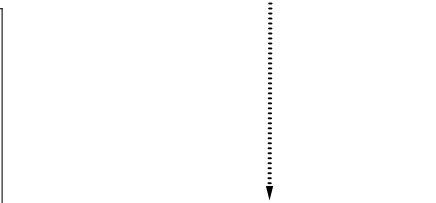
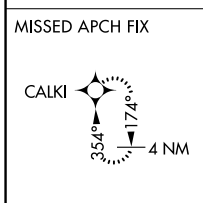
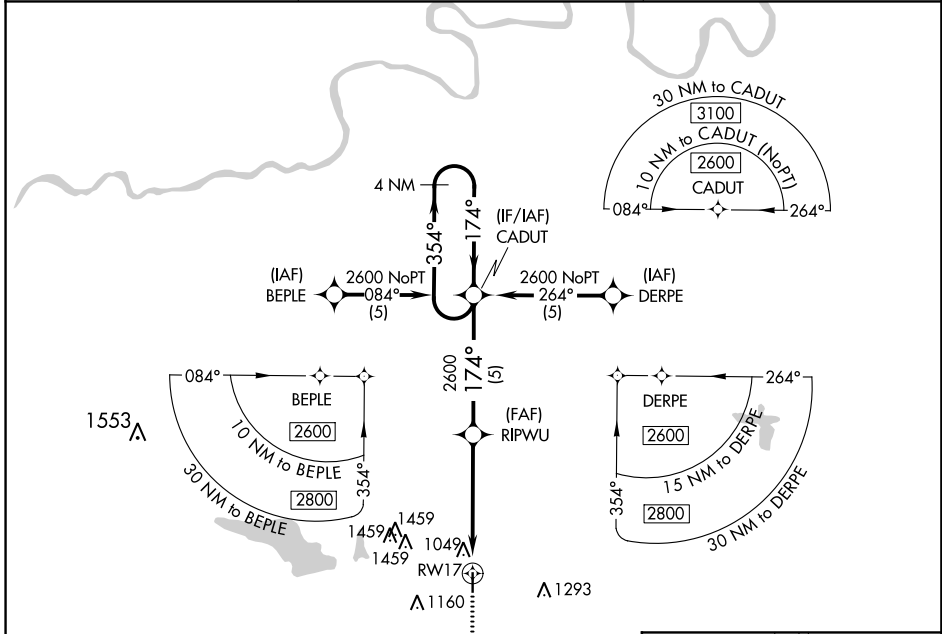
APP CRS	Rwy Idg	4000
174°	TDZE	984
	Apt Elev	985

RNAV (GPS) RWY 17

CHANDLER RGNL (CQB)

RNP APCH.	MISSED APPROACH: Climb to 2600 via 174° course to CALKI WP and hold.
<p>▼ When local altimeter setting not received, use Shawnee altimeter setting and increase all MDA 80 feet; increase LNAV Cat C visibility 1/8 SM.</p>	

AWOS-3 119.275	KANSAS CITY CENTER 127.8 319.1	CTAF 122.9
--------------------------	--	----------------------



4 NM Holding Pattern	VGSi and descent angles not coincident (VGSi Angle 3.00/TCH 42).		2600	CALKI
CADUT	RIPWU		174° crs	
2600 ← 354°	→ 174°	2600	1 NM to RW17	
		3.00° TCH 31	RW17	
	5 NM	4 NM	1 NM	

CATEGORY	A	B	C	D
LNAV MDA	1300-1	316 (400-1)		NA

SC-1, 30 JAN 2020 to 27 FEB 2020

SC-1, 30 JAN 2020 to 27 FEB 2020