

WAAS CH 90525 W04B	APP CRS 039°	Rwy Idg TDZE Apt Elev	5100 1383 1394
--	------------------------	-----------------------------	---

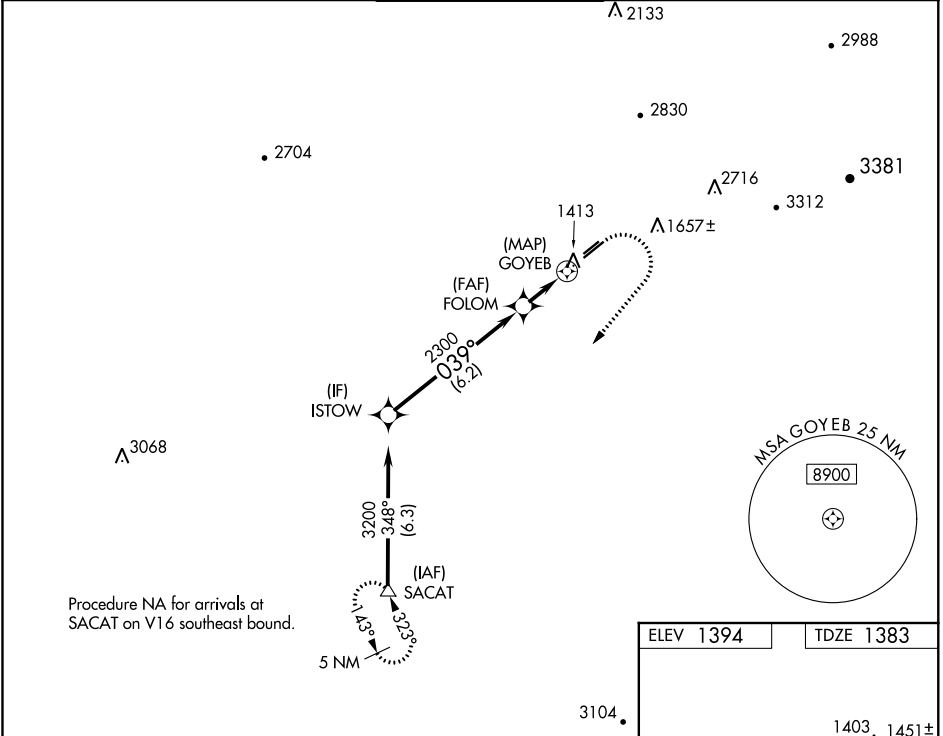
RNAV (GPS) RWY 4R

FALCON FIELD (F'F'Z)

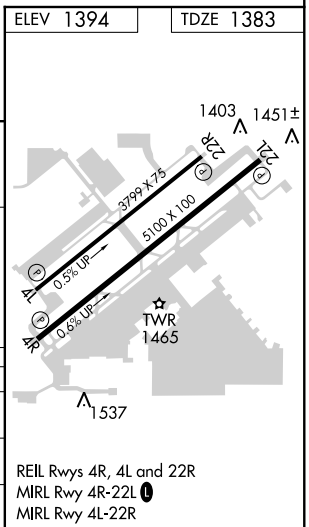
⚠ DME/DME RNP-0.3 NA. When local altimeter setting not received, use Phoenix Sky Harbor Intl altimeter setting and increase all MDA 80 feet and increase LNAV Cat C visibility 1/8 mile. Helicopter visibility reduction below 1 SM NA.

MISSED APPROACH: Climb to 1900 then climbing right turn to 5000 direct SACAT and hold, continue climb-in-hold to 5000.

ATIS 118.25	PHOENIX APP CON 120.7 239.0	FALCON TOWER * 124.6 (CTAF) 0	GND CON 121.3	UNICOM 122.95
-----------------------	---------------------------------------	--	-------------------------	-------------------------



ISTOW	VGSI and descent angles not coincident (VGSI Angle 4.00/TCH 42).			1900	5000	SACAT
				↑	↷	△
3200	FOLOM		GOYEB			
039°		3.00° TCH 41				
6.2 NM		2 NM		0.8		
CATEGORY	A	B	C	D		
LP MDA	1680-1 297 (300-1)			NA		
LNAV MDA	1800-1 417 (500-1)		1800-1 1/4 417 (500-1 1/4)		NA	
CIRCLING	1900-1 506 (600-1)		1900-1 1/2 506 (600-1 1/2)		NA	



SW-4, 30 JAN 2020 to 27 FEB 2020

SW-4, 30 JAN 2020 to 27 FEB 2020

REIL Rwy 4R, 4L and 22R
MIRL Rwy 4R-22L **0**
MIRL Rwy 4L-22R