

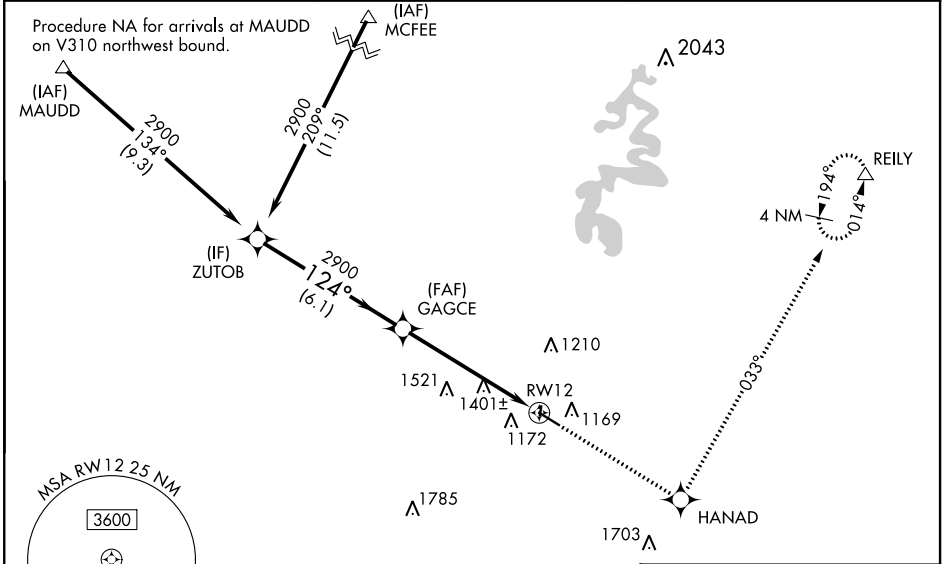
| | | | |
|--|------------------------|---|-------------|
| WAAS CH 93706 W12A | APP CRS 124° | Rwy Idg TDZE 1017 Apt Elev 1022 | 5000 |
|--|------------------------|---|-------------|

RNAV (GPS) RWY 12

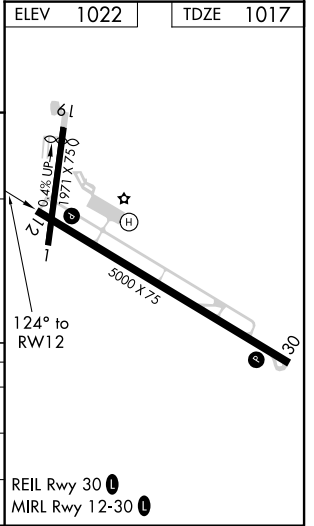
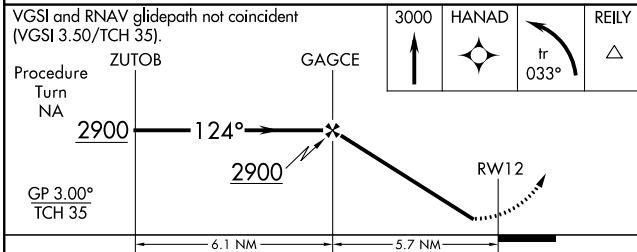
STUART POWELL FIELD (DVK)

| | | |
|--|--|--|
| RNP APCH. | | MISSED APPROACH: Climb to 3000 direct HANAD and left turn on 033° track to REILY and hold. |
| ⚠ NA When local altimeter setting not received, use Lexington altimeter setting; increase all DA/MDA 80 feet; increase LPV all Cats and LNAV/VNAV all Cats and LNAV all Cats visibility ¼ SM. For uncompensated Baro-VNAV systems, LNAV/VNAV NA below -17° C or above 47° C. Baro-VNAV NA when using Lexington altimeter setting. Rwy 12 helicopter visibility reduction below ¾ SM NA. | | |

| | | |
|--------------------------|--|---------------------------------|
| AWOS-3 128.325 | LEXINGTON APP CON 120.15 259.3 | UNICOM 122.8 (CTAF) 0 |
|--------------------------|--|---------------------------------|



| | |
|-----------|-----------|
| ELEV 1022 | TDZE 1017 |
|-----------|-----------|



| CATEGORY | A | B | C | D |
|--------------|---------|-------------|-------------------------|-----------------------|
| LPV DA | 1357-1¼ | | 340 (400-1¼) | |
| LNAV/VNAV DA | 1785-2¾ | | 768 (800-2¾) | |
| LNAV MDA | 1660-1 | 643 (700-1) | 1660-1¼ 643 (700-1¼) | 1660-2 643 (700-2) |

SE-1, 30 JAN 2020 to 27 FEB 2020

SE-1, 30 JAN 2020 to 27 FEB 2020