

(STRYA7.STRYA) 19115

AL-6453 (FAA)

TEXAS GULF COAST RGNL (LBX)
ANGLETON/LAKE JACKSON, TEXAS

STRYA SEVEN DEPARTURE (RNAV)

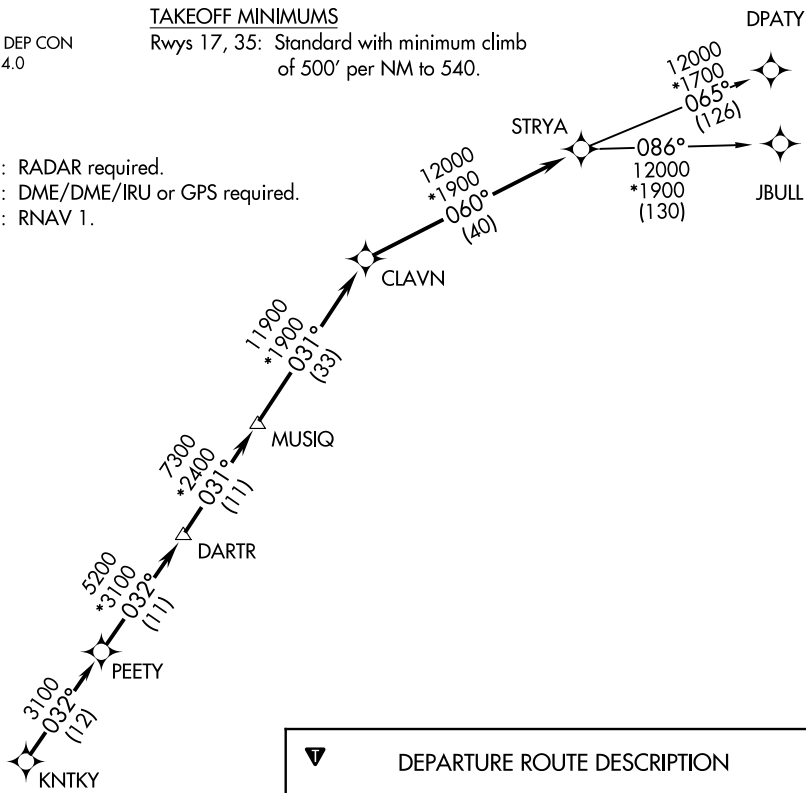
TOP ALTITUDE: ASSIGNED BY ATC

ASOS
119.925
CTAF
123.0
CLNC DEL
125.2
HOUSTON DEP CON
134.45 284.0

TAKEOFF MINIMUMS

Rwys 17, 35: Standard with minimum climb
of 500' per NM to 540.

NOTE: RADAR required.
NOTE: DME/DME/IRU or GPS required.
NOTE: RNAV 1.



DEPARTURE ROUTE DESCRIPTION

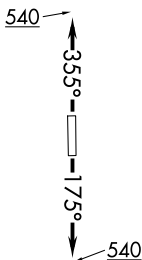
TAKEOFF RWY 17: Climb heading 175° to 540 for RADAR vectors to KNTKY, thence

TAKEOFF RWY 35: Climb heading 355° to 540 for RADAR vectors to KNTKY, thence

. . . . on track 032° to PEETY, then on track 032° to DARTR, then on track 031° to MUSIQ, then on track 031° to CLAVN, then on track 060° to STRYA, then on (transition). Maintain ATC assigned altitude. Expect filed altitude 10 minutes after departure.

DPATY TRANSITION (STRYA7.DPATY)

JBULL TRANSITION (STRYA7.JBULL)



NOTE: Chart not to scale.

SC-5, 30 JAN 2020 to 27 FEB 2020

SC-5, 30 JAN 2020 to 27 FEB 2020

STRYA SEVEN DEPARTURE (RNAV)

(STRYA7.STRYA) 25APR19

ANGLETON/LAKE JACKSON, TEXAS
TEXAS GULF COAST RGNL (LBX)