

HOODO SIX DEPARTURE (RNAV)

SC-5, 30 JAN 2020 to 27 FEB 2020

ASOS
119.925
CINC DEL
125.2
CTAF
123.0
HOUSTON DEP CON
134.45 284.0

NOTE: RNAV 1.

NOTE: RADAR required.

NOTE: ATC assigned only.

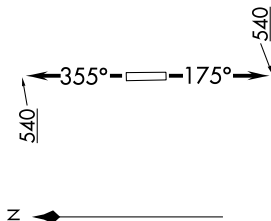
NOTE: DME/DME/IRU or GPS required.

NOTE: For non-GPS equipped aircraft, LCH, LLA, TBD, and LEV DME's must be operational.

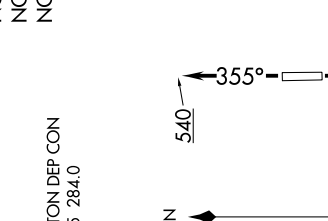
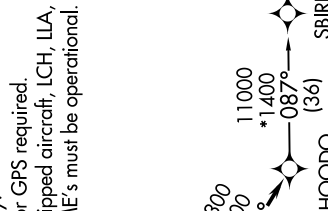
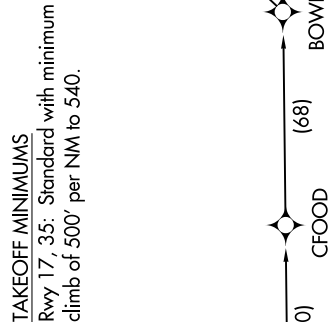
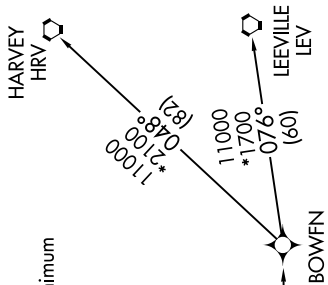
TAKEOFF MINIMUMS

Rwy 17, 35: Standard with minimum climb of 500' per NM to 540.

TOP ALTITUDE:
ASSIGNED BY ATC



SCHOLES
VUH



NOTE: Chart not to scale.

DEPARTURE ROUTE DESCRIPTION

TAKEOFF RWY 17: Climb heading 175° to 540, for RADAR vectors to VUH VOR/DME, thence

TAKEOFF RWY 35: Climb heading 355° to 540, for RADAR vectors to VUH VOR/DME, thence

. . . . on track 118° to HOODO, then on (transition). Maintain ATC assigned altitude.
Expect filed altitude 10 minutes after departure.

BOWFN TRANSITION (HOODO6.BOWFN)

CFOOD TRANSITION (HOODO6.CFOOD)

HARVEY TRANSITION (HOODO6.HRV)

LEEVILLE TRANSITION (HOODO6.LEV)

SBIRD TRANSITION (HOODO6.SBIRD)

SC-5, 30 JAN 2020 to 27 FEB 2020