

WAAS CH 82431 W34A	APP CRS 344°	Rwy Idg TDZE Apt Elev	4000 1206 1206
--	------------------------	-----------------------------	---

RNAV (GPS) RWY 34

AITKIN MUNI-STEVE KURTZ FIELD (AIT)

⚠ Baro-VNAV NA when using Mc Gregor altimeter setting. For uncompensated Baro-VNAV systems, LNAV/VNAV NA below -17°C (2°F) or above 54°C (130°F). DME/DME RNP-0.3 NA. When local altimeter setting not received; use Mc Gregor altimeter setting and increase all DA 40 feet and all visibilities 1/8 SM, increase all MDA 40 feet and LNAV Cat C visibility 1/4 SM. Circling NA to Rwy 8 and 26. Rwy 34 helicopter visibility reduction below 3/4 SM NA.

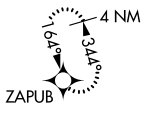
MISSED APPROACH:
Climb to 3400 direct ZAPUB and hold.

AWOS-3
118.675

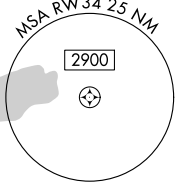
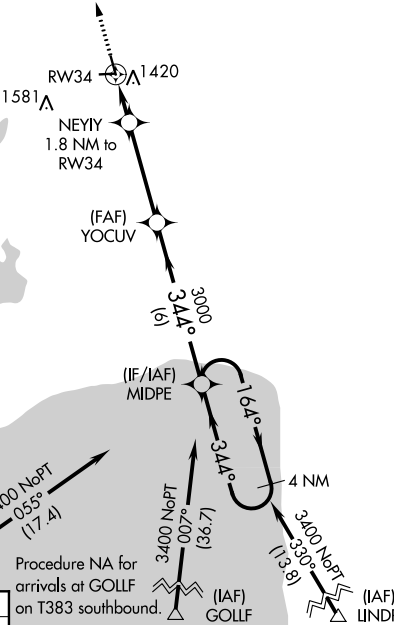
MINNEAPOLIS CENTER
118.05 239.0

UNICOM
123.05 (CTAF) **📶**

MISSED APCH FIX



1749

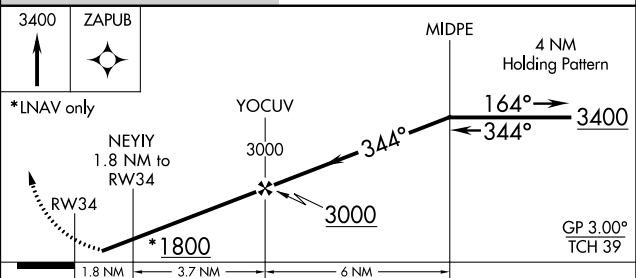
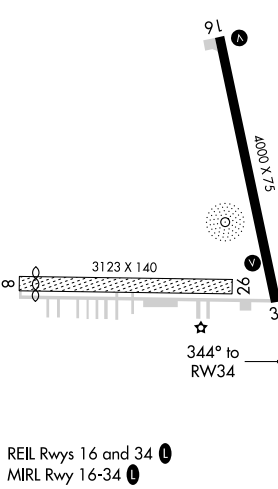


Procedure NA for arrivals at YEPSU on T383 southbound.

Procedure NA for arrivals at GOLLF on T383 southbound.

Procedure NA for arrivals at LINDR on V218 southbound.

ELEV 1206	D	TDZE 1206
-----------	----------	-----------



CATEGORY	A	B	C	D
LPV DA	1548-1 1/8	342 (400-1 1/8)		NA
LNAV/VNAV DA	1620-1 3/8	414 (500-1 1/8)		NA
LNAV MDA	1720-1	514 (600-1)	1720-1 3/8 514 (600-1 1/8)	NA
C CIRCLING	1780-1	574 (600-1)	1900-2 694 (700-2)	NA

NC-1, 30 JAN 2020 to 27 FEB 2020

NC-1, 30 JAN 2020 to 27 FEB 2020