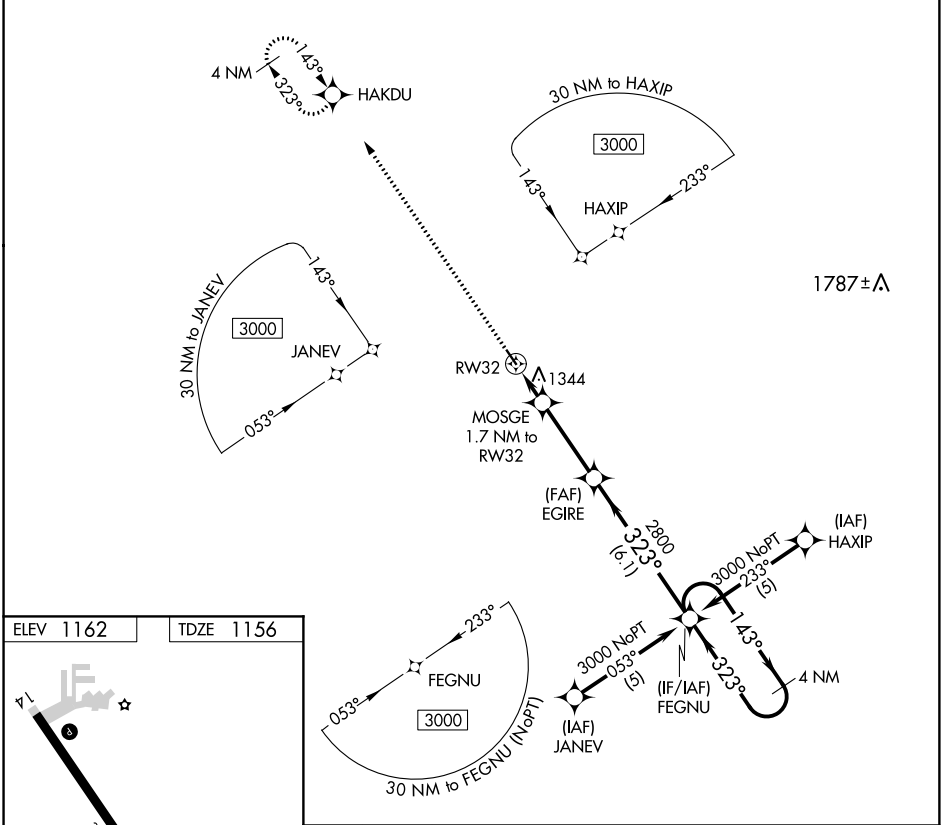


APP CRS <b>323°</b>	Rwy Idg <b>3455</b>
	TDZE <b>1156</b>
	Apt Elev <b>1162</b>

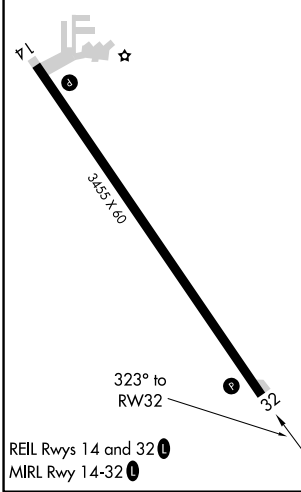
# RNAV (GPS) RWY 32

CLARION MUNI (CAV)

RNP APCH.		MISSED APPROACH: Climb to 3000 direct HAKDU and hold.
<p>▼ When local altimeter setting not received, use Fort Dodge altimeter setting and increase all MDA 60 feet. Rwy 32 helicopter visibility reduction below ¼ SM NA.</p>	AWOS-3 <b>126.575</b>	MINNEAPOLIS CENTER <b>134.0 288.3</b>
		UNICOM <b>122.8 (CTAF) 0</b>



ELEV 1162	TDZE 1156
-----------	-----------



3000 HAKDU	VGSi and descent angles not coincident (VGSi Angle 3.00/TCH 43).		FEGNU	4 NM Holding Pattern
↑	EGIRE		1740	3000
MOSGE 1.7 NM to RW32	EGIRE	3.3 NM	6.1 NM	
RW32				
1.7	3.3 NM	6.1 NM		
CATEGORY	A	B	C	D
LNAV MDA	1600-1	444 (500-1)		NA

NC-3, 30 JAN 2020 to 27 FEB 2020

NC-3, 30 JAN 2020 to 27 FEB 2020