

TERRELL, TEXAS

AL-6340 (FAA)

19115

NDB AVZ 260	APP CRS 193°	Rwy Idg TDZE Apt Elev	5006 474 474
-----------------------	------------------------	-----------------------------	---

NDB RWY 17

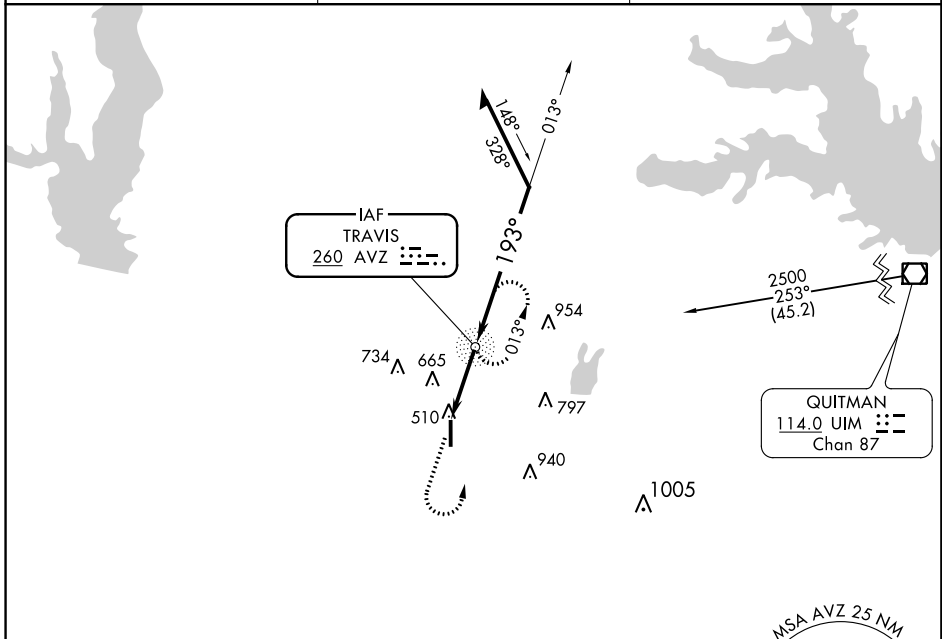
TERRELL MUNI (TRL)

▽ When VGSI inop, Straight-in/Circling Rwy 17 procedure NA at night. If local altimeter setting not received, use Dallas-Love Field altimeter setting and increase all MDAs 80 feet.

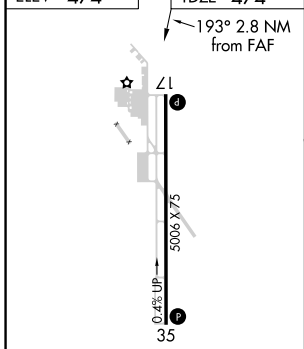
△ NA

MISSED APPROACH: Climb to 1500 then climbing left turn to 2500 direct AVZ NDB and hold.

ASOS 119.275	FORT WORTH CENTER 132.025 360.75	UNICOM 122.8 (CTAF) 0
------------------------	--	---------------------------------



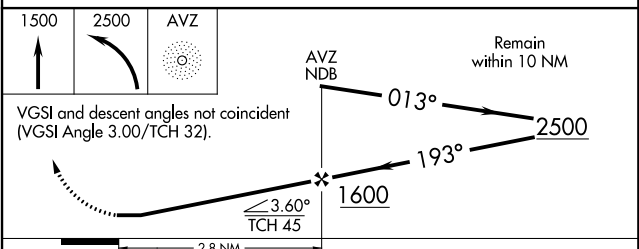
ELEV 474	TDZE 474
----------	----------



RLS Rwy 17 **0**
REIL Rwys 17 and 35
MIRL Rwys 17-35 **0**

FAF to MAP 2.8 NM

Knots	60	90	120	150	180
Min:Sec	2:48	1:52	1:24	1:07	0:56



CATEGORY	A	B	C	D
S-17	980-1	506 (600-1)	980-1½ 506 (600-1½)	NA
CIRCLING	980-1	506 (600-1)	980-1½ 506 (600-1½)	NA

TERRELL, TEXAS
Amdt 4 27APR17

32°43'N-96°16' W

TERRELL MUNI (TRL) NDB RWY 17

SC-2, 30 JAN 2020 to 27 FEB 2020

SC-2, 30 JAN 2020 to 27 FEB 2020