

OLIVIA, MINNESOTA

AL-6301 (FAA)

19171

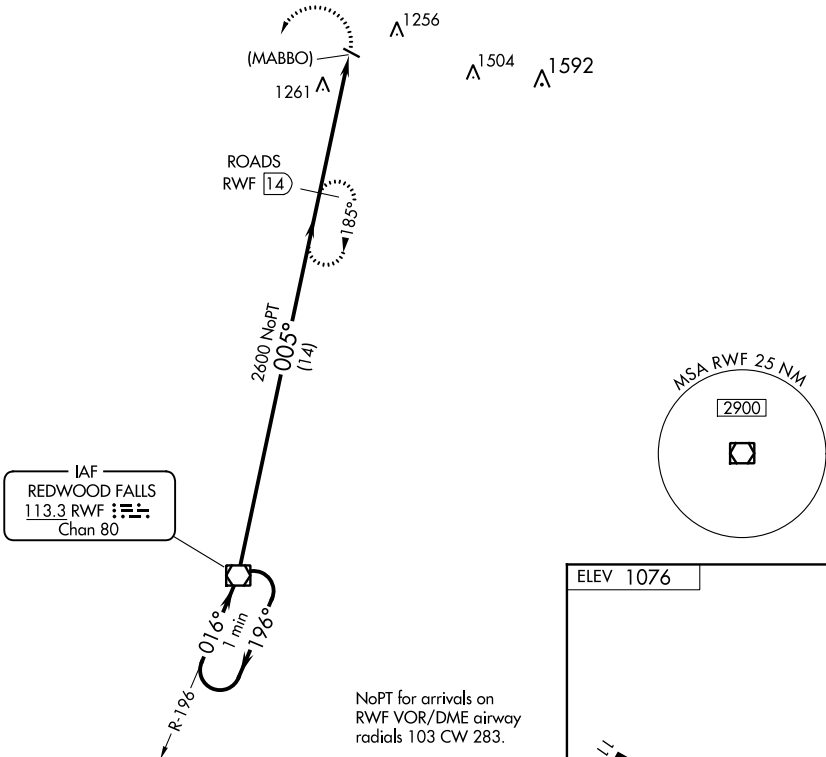
VOR/DME RWF 113.3 Chan 80	APP CRS 005°	Rwy Idg TDZE Apt Elev N/A N/A 1076
---	------------------------	--

VOR/DME or GPS-A

OLIVIA RGNL (OVL)

NA Use Redwood Falls altimeter setting.	MISSED APPROACH: Climbing left turn to 2600 via RWF R-005 to ROADS 14 DME and hold.
--	---

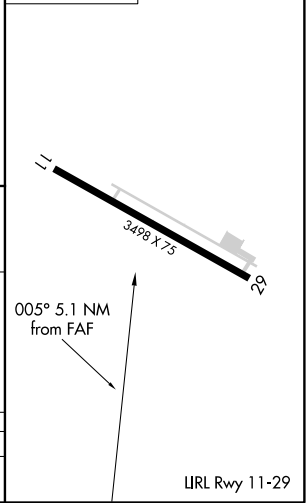
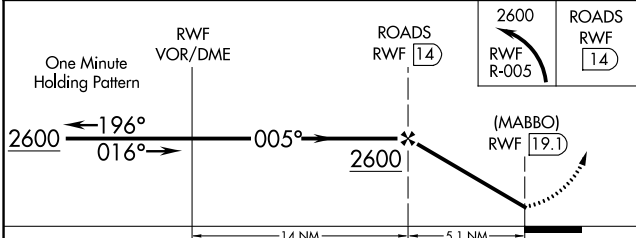
AWOS-3 119.275	MINNEAPOLIS CENTER 127.1 290.2	UNICOM 122.8 (CTAF)
--------------------------	--	-------------------------------



IAF
REDWOOD FALLS
113.3 RWF Chan 80

ELEV 1076

NoPT for arrivals on RWF VOR/DME airway radials 103 CW 283.



CATEGORY	A	B	C	D
CIRCLING	1620-1	544 (600-1)	1720-1¾ 644 (700-1¾)	1720-2 644 (700-2)

URL Rwy 11-29

NC-1, 30 JAN 2020 to 27 FEB 2020

NC-1, 30 JAN 2020 to 27 FEB 2020

OLIVIA, MINNESOTA
Amdt 2A 31MAR16

44°47'N-95°02'W

VOR/DME or GPS-A

OLIVIA RGNL (OVL)