

VOR/DME GDM <b>110.6</b> Chan <b>43</b>	APP CRS <b>292°</b>	Rwy Idg TDZE Apt Elev <b>N/A</b> <b>N/A</b> <b>359</b>
---	------------------------	--

# VOR-A

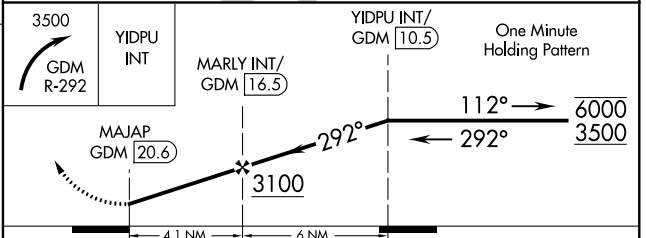
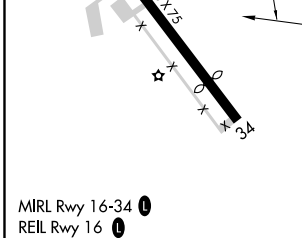
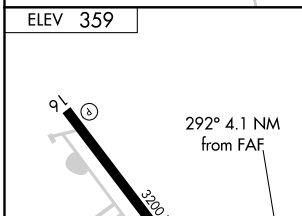
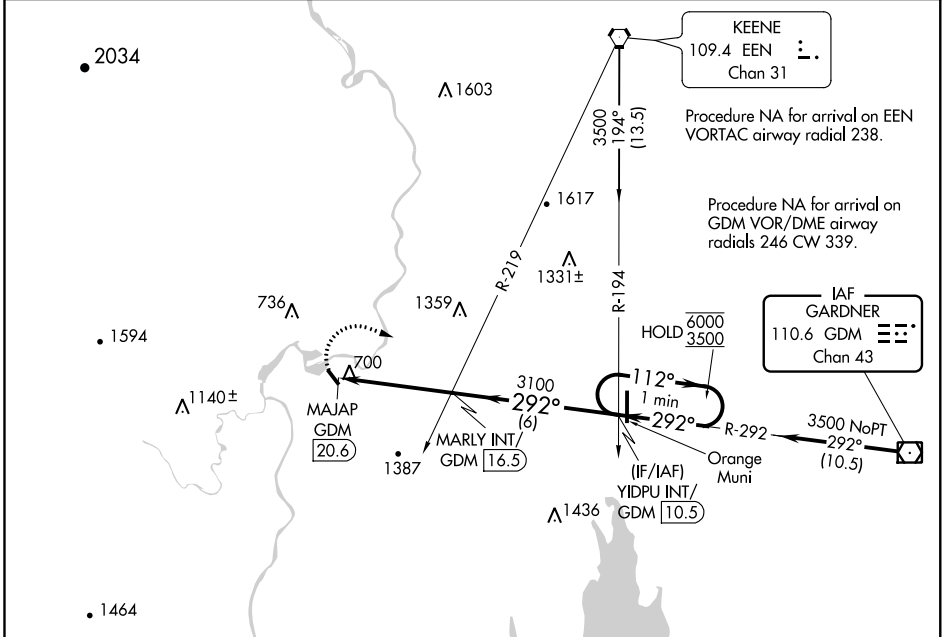
TURNERS FALLS (ØB5)

**NA** Circling Rwy 34 NA at night. Obtain local altimeter setting on CTAF; when not received, use Orange altimeter setting and increase all MDA 60 feet.

MISSED APPROACH: Climbing right turn to 3500 on GDM VOR/DME R-292 to YIDPU INT/GDM 10.5 DME and hold.

BOSTON CENTER **123.75 338.2**

UNICOM **123.0 (CTAF)**



FAF to MAP 4.1 NM					
Knots	60	90	120	150	180
Min:Sec	4:06	2:44	2:03	1:38	1:22

CATEGORY	A	B	C	D
CIRCLING	1660-1¼ 1301 (1400-1¼)	1660-1½ 1301 (1400-1½)	1660-3 1301 (1400-3)	NA

NE-1, 30 JAN 2020 to 27 FEB 2020

NE-1, 30 JAN 2020 to 27 FEB 2020