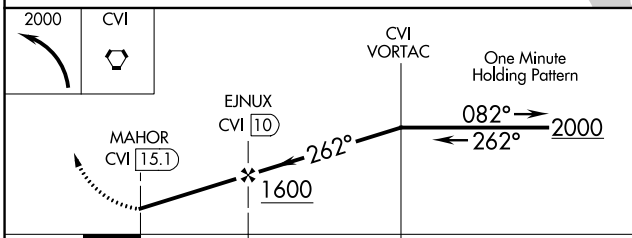
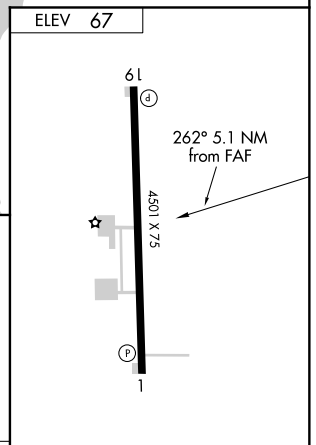
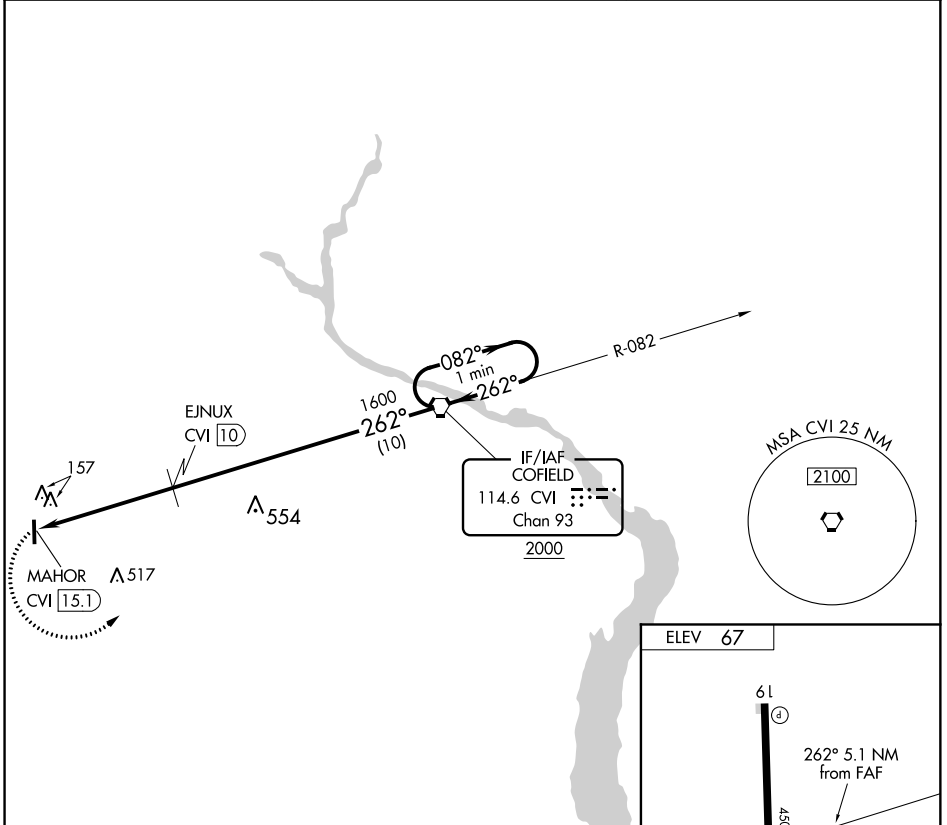


VORTAC CVI <b>114.6</b> Chan <b>93</b>	APP CRS <b>262°</b>	Rwy Idg TDZE Apt Elev	<b>N/A</b> <b>N/A</b> <b>67</b>
--	------------------------	-----------------------------	---------------------------------------

**VOR-A**  
TRI-COUNTY (A.SJ)

DME required.		MISSED APPROACH: Climbing left turn to 2000 direct CVI VORTAC and hold.
<p><b>⚠</b> Rwy 1 helicopter visibility reduction below 1 SM NA. Circling Rwy 1 NA at night. When local altimeter setting not received, use Franklin altimeter setting and increase all MDA 80 feet; increase Cat D visibility ¼ mile.</p>		
AWOS-3 <b>119.075</b>	WASHINGTON CENTER <b>123.85 279.65</b>	UNICOM <b>122.8 (CTAF) 0</b>



CATEGORY	A	B	C	D
<b>C</b> CIRCLING	580-1	513 (600-1)	580-1½ 513 (600-1½)	820-2½ 753 (800-2½)

MIRL Rwy 1-19 **0**  
REIL Rws 1 and 19 **0**

SE-2, 30 JAN 2020 to 27 FEB 2020

SE-2, 30 JAN 2020 to 27 FEB 2020