

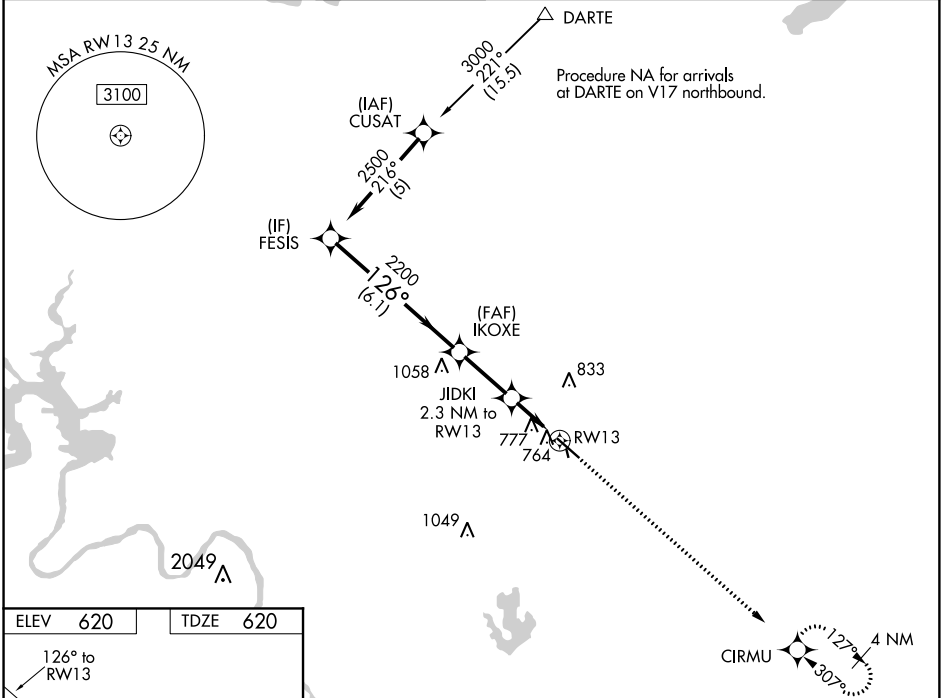
WAAS CH 63116 W13A	APP CRS 126°	Rwy Idg TDZE Apt Elev	5425 620 620
--	------------------------	-----------------------------	---

RNAV (GPS) RWY 13

AUSTIN EXECUTIVE (EDC)

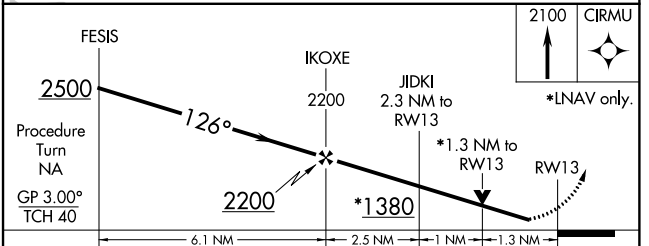
RNP APCH.	<p>▼ Baro-VNAV NA when using Austin-Bergstrom Intl altimeter setting. For uncompensated Baro-VNAV systems, LNAV/VNAV NA below -16°C (4°F) or above 47°C (116°F). Visibility reduction by helicopters NA. When local altimeter setting not received, use Austin-Bergstrom Intl altimeter setting: increase LPV DA to 912 feet, increase LNAV/VNAV DA to 1168 feet; increase all MDA 60 feet. VDP NA with Austin-Bergstrom Intl altimeter setting. Circling NA to Rwy 16 and 34.</p>	MISSED APPROACH: Climb to 2100 direct CIRMU and hold.
-----------	--	--

AWOS-3 118.825	APP CON 127.225 317.65	EXECUTIVE TOWER★ 120.3 (CTAF) 0	GND CON 119.45	CLNC DEL 126.025 (when tower closed)	UNICOM 122.975
--------------------------	----------------------------------	---	--------------------------	---	--------------------------



ELEV 620	TDZE 620
----------	----------

126° to RWY 13



CATEGORY	A	B	C	D
LPV DA		870-1	250 (300-1)	
LNAV/VNAV DA		1126-1¾	506 (600-1¾)	
LNAV MDA	1080-1	460 (500-1)	1080-1½ 460 (500-1½)	1080-1½ 460 (500-1½)
C CIRCLING	1140-1 520 (600-1)	1160-1 540 (600-1)	1160-1½ 540 (600-1½)	1220-2 600 (600-2)

MIRL Rwy 13-31
REIL Rwy 13 and 31

SC-3, 30 JAN 2020 to 27 FEB 2020

SC-3, 30 JAN 2020 to 27 FEB 2020