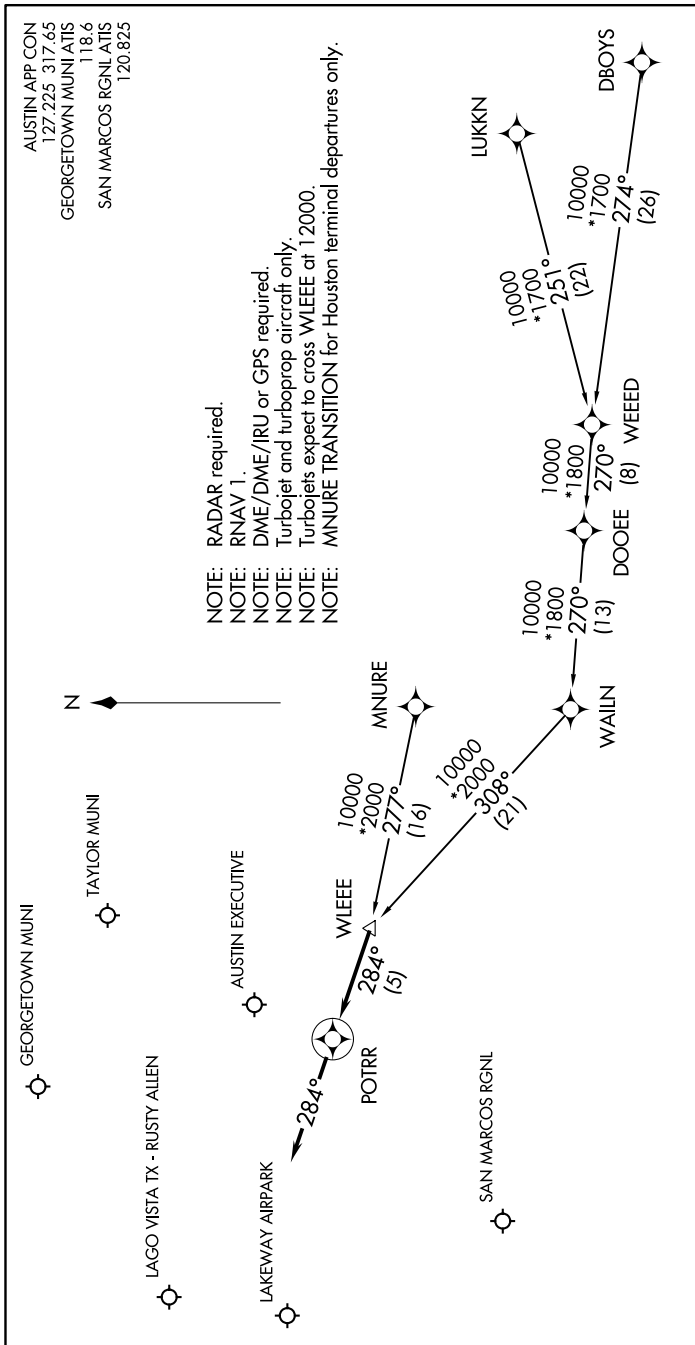


# POTRR ONE ARRIVAL (RNAV)

AUSTIN, TEXAS

SC-3, 30 JAN 2020 to 27 FEB 2020



NOTE: RADAR required.  
 NOTE: RNAV 1.  
 NOTE: DME/DME/IRU or GPS required.  
 NOTE: Turbojet and turboprop aircraft only.  
 NOTE: Turbojets expect to cross WLEEE at 12000.  
 NOTE: MNURE TRANSITION for Houston terminal departures only.

AUSTIN APP CON  
 127.225 317.65  
 GEORGETOWN MUNI ATIS  
 118.6  
 SAN MARCOS RGNL ATIS  
 120.825

## ARRIVAL ROUTE DESCRIPTION

DBOYS TRANSITION (DBOYS.POTRR1)  
LUKKN TRANSITION (LUKKN.POTRR1)  
MNURE TRANSITION (MNURE.POTRR1)  
WEEED TRANSITION (WEEED.POTRR1)

LANDING ALL AIRPORTS: From WLEEE on track 284° to POTRR, then on track 284°. Expect RADAR vectors to final approach course.

SC-3, 30 JAN 2020 to 27 FEB 2020

# POTRR ONE ARRIVAL (RNAV)

AUSTIN, TEXAS