

WAAS CH 87104 W18A	APP CRS 182°	Rwy Idg TDZE Apt Elev	4999 418 418
--	------------------------	-----------------------------	---

RNAV (GPS) RWY 18

PERRY-HOUSTON COUNTY (PXE)

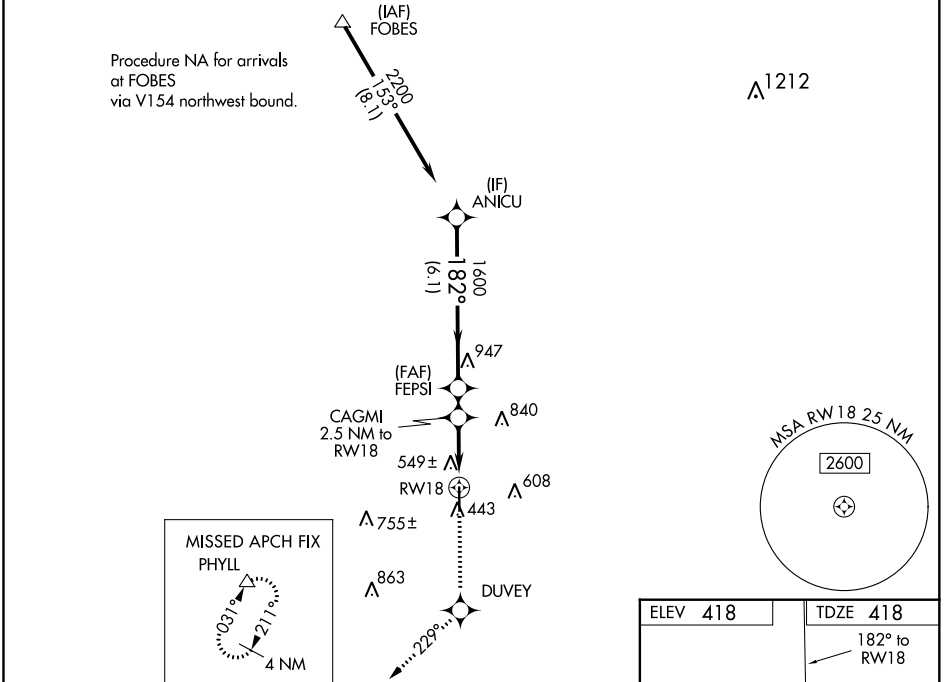
▽ **△** NA For uncompensated Baro-VNAV systems, LNAV/VNAV NA below -15°C (5°F) or above 47°C (116°F). DME/DME RNP-0.3 NA. If local altimeter setting not received, procedure NA.

MISSED APPROACH: Climb to 2000 direct DUVEY and via 229° track to PHYLL and hold.

AWOS-3
123.825

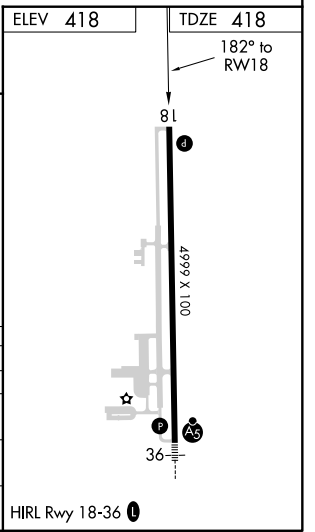
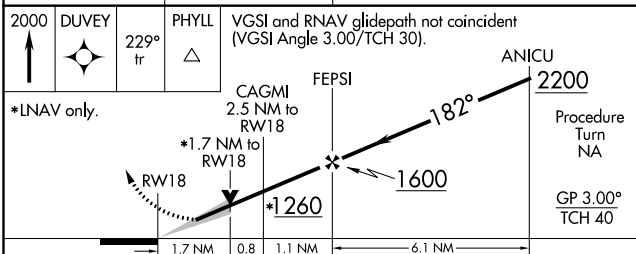
ATLANTA APP CON ★
124.2 279.6

UNICOM
122.725 (CTAF)



SE-4, 30 JAN 2020 to 27 FEB 2020

SE-4, 30 JAN 2020 to 27 FEB 2020



CATEGORY	A	B	C	D
LPV DA	668-1 250 (300-1)			
LNAV/DA VNAV	854-1½ 436 (500-1½)			
LNAV MDA	980-1 562 (600-1)	980-1½ 562 (600-1½)	980-1¾ 562 (600-1¾)	
CIRCLING	980-1 562 (600-1)	980-1½ 562 (600-1½)	980-2 562 (600-2)	

HIRL Rwy 18-36