

VOR/DME BSV 112.4 Chan 71	APP CRS 296°	Rwy Idg 4971 TDZE 1134 Apt Elev 1136
---	------------------------	---

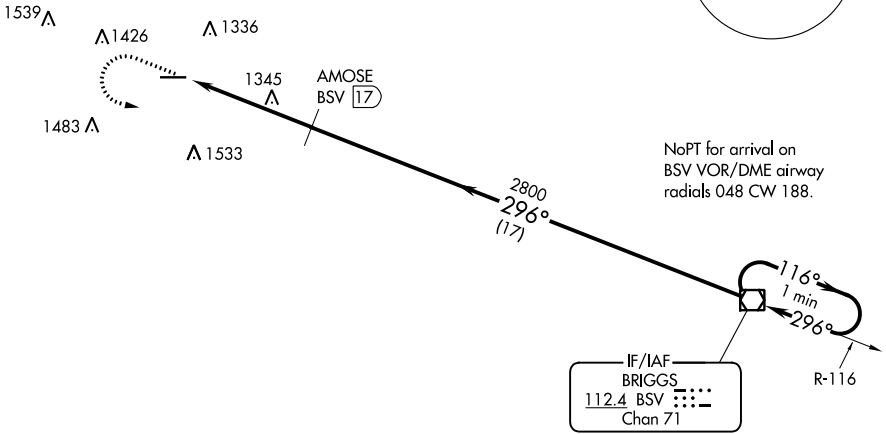
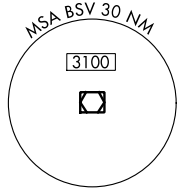
VOR RWY 28
WAYNE COUNTY (BJJ)

▼ DME required. Helicopter visibility reduction below 3/4 SM NA. When local altimeter setting not received, use Akron-Canton Rgnl altimeter setting and increase all MDA 60 feet.

MISSED APPROACH: Climb to 2800 then left turn direct BSV VOR/DME and hold.

ASOS 118.075	CLEVELAND APP CON ★ 118.6 371.875	CLNC DEL 121.75	UNICOM 122.8 (CTAF) 0
------------------------	---	---------------------------	---------------------------------

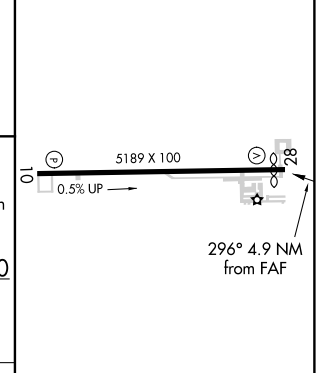
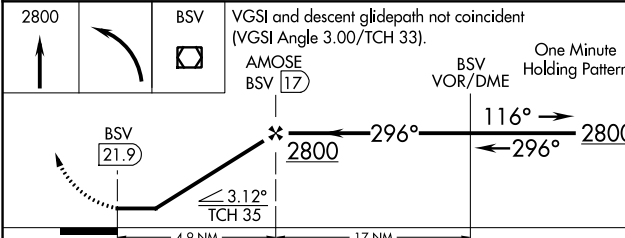
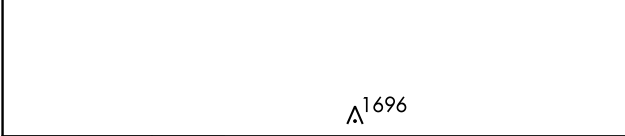
DME REQUIRED



EC-2, 30 JAN 2020 to 27 FEB 2020

EC-2, 30 JAN 2020 to 27 FEB 2020

ELEV 1136	TDZE 1134
-----------	-----------



CATEGORY	A	B	C	D
S-28	1660-1 526 (600-1)	1660-1¼ 526 (600-1¼)	1660-1½ 526 (600-1½)	1660-1¾ 526 (600-1¾)
CIRCLING	1660-1 524 (600-1)	1660-1¼ 524 (600-1¼)	1660-1½ 524 (600-1½)	1700-2 564 (600-2)

REIL Rwy 10 and 28 0
HIRL Rwy 10-28 0

FAF to MAP 4.9 NM

Knots	60	90	120	150	180
Min:Sec	4:54	3:16	2:27	1:58	1:38