


|             |          |              |
|-------------|----------|--------------|
| APP CRS     | Rwy Idg  | <b>10000</b> |
| <b>087°</b> | TDZE     | <b>91</b>    |
|             | Apt Elev | <b>96</b>    |

# RNAV (RNP) Y RWY 9

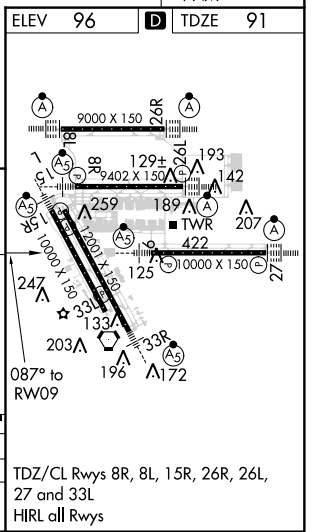
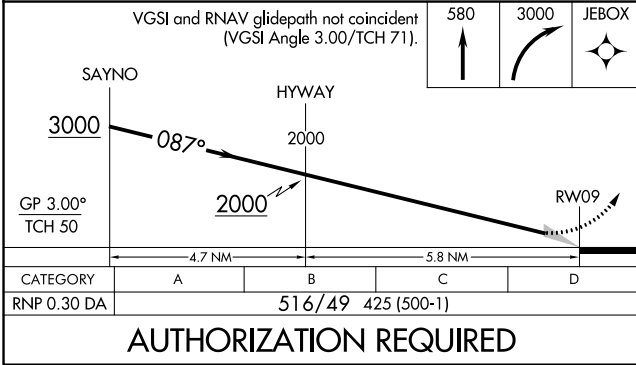
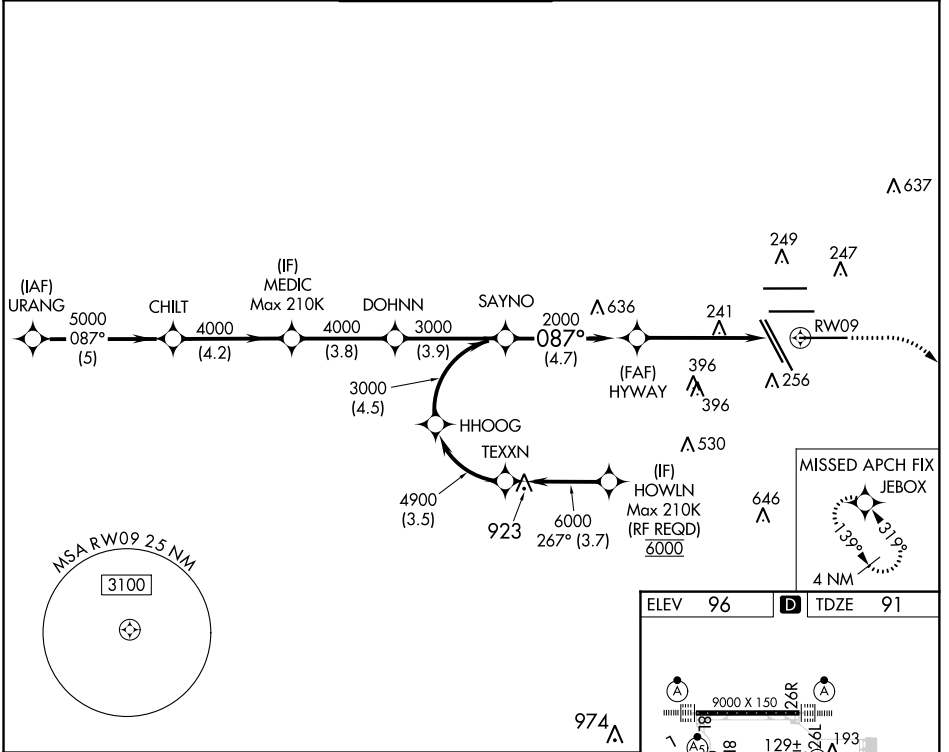
## GEORGE BUSH INTERCONTINENTAL/HOUSTON (IAH)

**▽** For uncompensated Baro-VNAV systems, procedure NA below -3°C (27°F) or above 54°C (130°F). GPS required. For inop MALSRL, increase all Cats visibility to 1 3/8 mile. Simultaneous approach authorized. Use of FD or AP providing RNAV track guidance required during simultaneous operations.

MALSRL 

MISSED APPROACH: Climb to 580 then climbing right turn to 3000 direct JEBOX and hold.

|               |   |                     |                |              |       |
|---------------|---|---------------------|----------------|--------------|-------|
| D-ATIS        | HOUSTON APP CON                                       | HOUSTON TOWER       | GND CON        | CLNC DEL     | CPDLC |
| <b>124.05</b> | <b>120.05 379.1 EAST</b><br><b>124.35 316.15 WEST</b> | <b>135.15 290.2</b> | <b>118.575</b> | <b>128.1</b> |       |



SC-5, 30 JAN 2020 to 27 FEB 2020

SC-5, 30 JAN 2020 to 27 FEB 2020

### AUTHORIZATION REQUIRED