

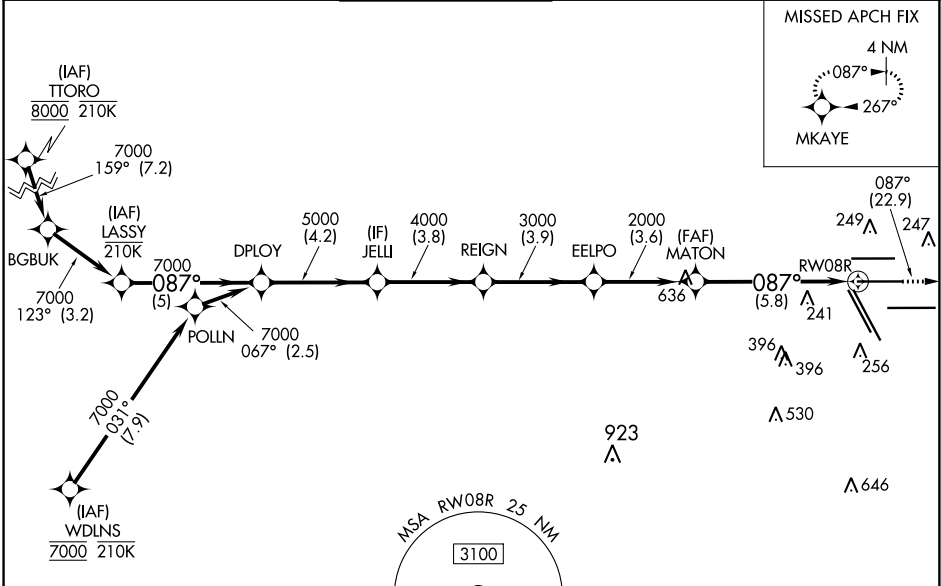
APP CRS	Rwy Idg	9402
087°	TDZE	95
	Apt Elev	96

RNAV (RNP) Y RWY 8R

GEORGE BUSH INTERCONTINENTAL/HOUSTON (IAH)

RNP AR APCH. For uncompensated Baro-VNAV systems, procedure NA below -3°C or above 54°C. For inop ALS increase RNP 0.13 all Cats visibility to RVR 4500, RNP 0.14 all Cats visibility to RVR 5600, RNP 0.30 all Cats visibility to 1½ SM. Simultaneous approach authorized.	MALSR 	MISSED APPROACH: Climb to 3000 on track 087° to MKAYE and hold.

D-ATIS 124.05	HOUSTON APP CON 120.05 379.1 EAST 124.35 316.15 WEST	HOUSTON TOWER 125.35 290.2	GND CON 118.575	CLNC DEL 128.1	CPDLC
-------------------------	--	--------------------------------------	---------------------------	--------------------------	-------



SC-5, 30 JAN 2020 to 27 FEB 2020

SC-5, 30 JAN 2020 to 27 FEB 2020

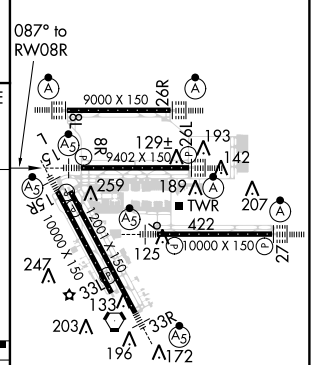
ELEV 96	TDZE 95
---------	---------

VGSI and RNAV glidepath not coincident (VGSI Angle 3.00/TCH 72).

Waypoint	Altitude	Distance (NM)
LASSY	7000	-5
DPLOY	7000	-4.2
JELLI	5000	-3.8
REIGN	4000	-3.9
EELPO	3000	-3.6
MATON	2000	-3.6
RWY 8R	2000	-5.8

GP 3.00° TCH 55

CATEGORY	A	B	C	D
RNP 0.13 DA		383/40	288 (300-¾)	
RNP 0.14 DA		441/40	346 (400-¾)	
RNP 0.30 DA		492/45	397 (400-¾)	



TDZ/CL Rwys 8R, 8L, 15R, 26R, 26L, 27 and 33L
HIRL all Rwys

RNAV (RNP) Y RWY 8R