

WAAS CH 97599	APP CRS W15A	Rwy Idg TDZE Apt Elev	9999 95 96
-------------------------	------------------------	-----------------------------	---------------------------------------

RNAV (GPS) RWY 15R

GEORGE BUSH INTERCONTINENTAL/HOUSTON (IAH)

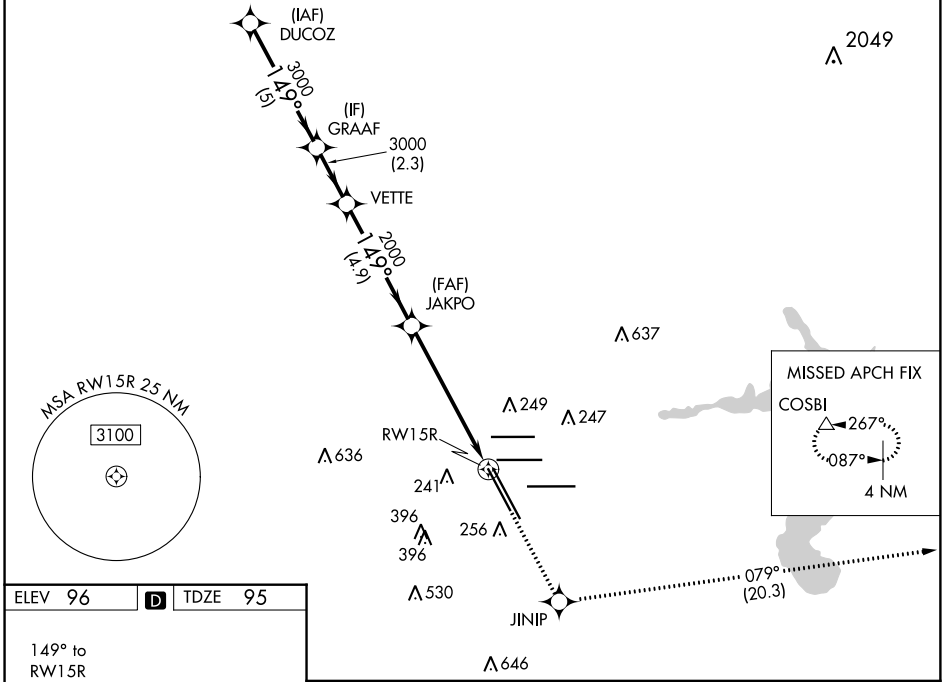
RADAR required for procedure entry.
RNP APCH.

For uncompensated Baro-VNAV systems, LNAV/VNAV NA below -3°C or above 54°C. For inop ALS, increase LPV Cat E visibility to RVR 4000, LNAV/VNAV all Cats visibility to RVR 5500, and LNAV Cat C/D/E visibility to 1 3/8 SM.

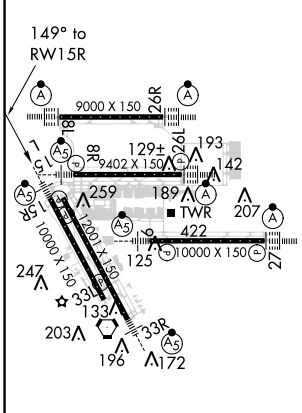
MALS R

MISSED APPROACH: Climb to 2000 direct JINIP and left turn on track 079° to COSBI and hold.

D-ATIS 124.05	HOUSTON APP CON 120.05 379.1 EAST 124.35 316.15 WEST	HOUSTON TOWER 127.3 288.25	GND CON 121.7	CLNC DEL 128.1	CPDLC
-------------------------	--	--------------------------------------	-------------------------	--------------------------	-------



ELEV 96	D	TDZE 95
---------	----------	---------



TDZ/CL Rwy 8R, 8L, 15R, 26R, 26L, 27 and 33L
HIRL all Rwy

VGSI and RNAV glidepath not coincident (VGSI Angle 3.00/TCH 71).

DUCOZ	GRAAF	VETTE	JAKPO	JINIP	COSBI
3000	3000	3000	2000	2000	2000
GP 3.00° TCH 54		*1.3 NM to RWY 15R		*LNAV only.	
5 NM		2.3 NM		4.9 NM	
4.5 NM		1.3 NM			
CATEGORY	A	B	C	D	E
LPV DA	295/18		200 (200-1/2)		
LNAV/VNAV DA	460/35		365 (400-3/8)		
LNAV MDA	580/24		485 (500-1/2)		580/50 485 (500-1)

SC-5, 30 JAN 2020 to 27 FEB 2020

SC-5, 30 JAN 2020 to 27 FEB 2020