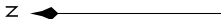
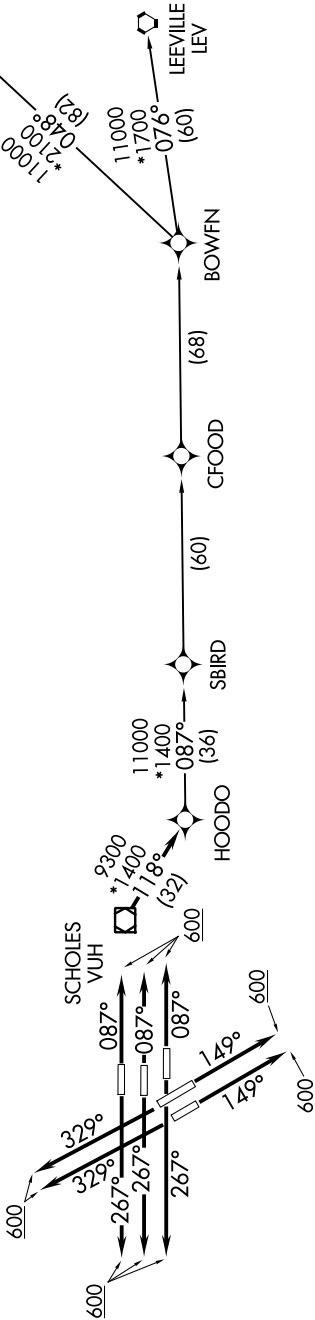


TOP ALTITUDE:
16000



- NOTE: RNAV 1.
- NOTE: RADAR required.
- NOTE: ATC assigned only.
- NOTE: DME/DME/IRU or GPS required.
- NOTE: For non-GPS equipped aircraft, LCH, LLA, TBD, and LEV DME's must be operational.

- D-ATIS
- 124.05
- CINC DEL
- 128.1
- CPDLC
- GND.CON
- 118.575 (Rwys 8L/R, 9, 26L/R, 27)
- 121.7 (Rwys 15L/R, 33L/R)
- HOUSTON TOWER
- 120.725 290.2 (Rwys 8L, 26R)
- 125.35 290.2 (Rwys 8R, 26L)
- 127.3 288.25 (Rwys 15L/R, 33L/R)
- 135.15 290.2 (Rwys 9, 27)
- HOUSTON DEP CON
- 127.125 269.075



TAKEOFF MINIMUMS
 Rwys 8L/R, 9, 15L/R, 26L/R, 27, 33L/R:
 Standard with minimum climb of 500' per NM to 600.

NOTE: Chart not to scale.

(NARRATIVE ON FOLLOWING PAGE)