

(UECKR5.UECKR) 18256

# UECKR FIVE DEPARTURE (RNAV)

AL-5449 (FAA)

KENOSHA RGNL (ENW)  
KENOSHA, WISCONSIN

ATIS  
127.175  
CLNC DEL  
121.875  
118.6 (When tower closed)  
GND CON  
121.875  
MILWAUKEE DEP CON  
135.875 317.725

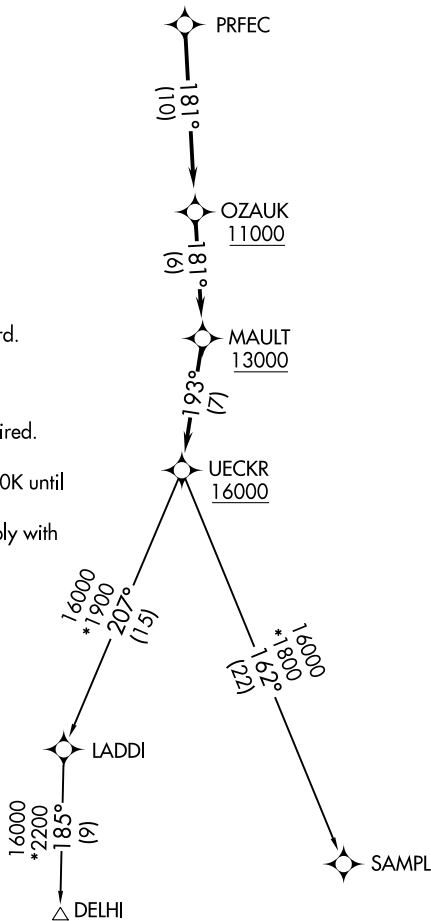
**TOP ALTITUDE:  
ASSIGNED BY ATC**



### TAKEOFF MINIMUMS

Rwys 7L/R, 15, 25L/R, 33: Standard.

- NOTE: RNAV 1.
- NOTE: GPS or DME/DME/IRU required.
- NOTE: RADAR required.
- NOTE: Turbojet aircraft maintain 250K until advised by ATC.
- NOTE: Notify ATC if unable to comply with crossing restrictions.



NOTE: Chart not to scale.

### DEPARTURE ROUTE DESCRIPTION

Climb on assigned heading for RADAR vectors to PRFEC, thence. . . .

. . . .on track 181° to cross OZAUK at or above 11 000, then on track 181° to cross MAULT at or above 13 000, then on track 193° to cross UECKR at or above 16 000, then on (transition). Maintain ATC assigned altitude, expect filed altitude ten minutes after departure.

DELHI TRANSITION (UECKR5.DELHI)

SAMPL TRANSITION (UECKR5.SAMPL)

# UECKR FIVE DEPARTURE (RNAV)

(UECKR5.UECKR) 13SEP18

KENOSHA, WISCONSIN  
KENOSHA RGNL (ENW)

EC-3, 30 JAN 2020 to 27 FEB 2020

EC-3, 30 JAN 2020 to 27 FEB 2020