

APP CRS 083°	Rwy Idg 4899 TDZE 634 Apt Elev 634
------------------------	---

RNAV (GPS) RWY 8

GRIFFITH-MERRILLVILLE (Ø5C)

RNP APCH

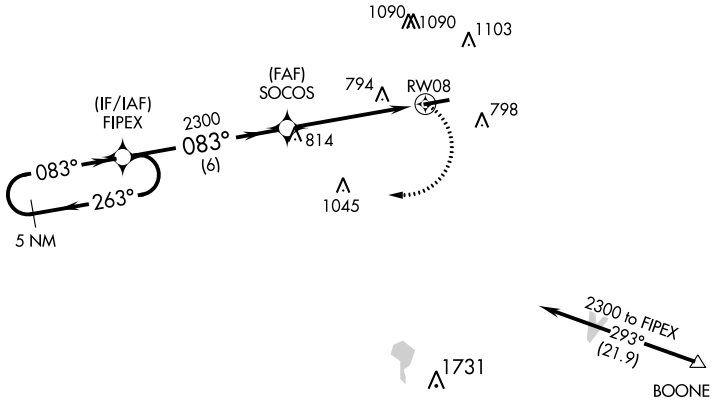
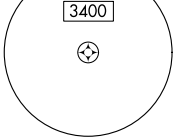
▼ Obtain local altimeter setting on CTAF; when not received use Chicago Midway
 ▲ NA Init altimeter setting and increase all MDAs 60 feet. Visibility reduction by helicopters NA. Procedure NA at night.

MISSED APPROACH: Climbing right turn to 2300 direct FIPEX and hold.

CHICAGO APP CON
133.1 285.6

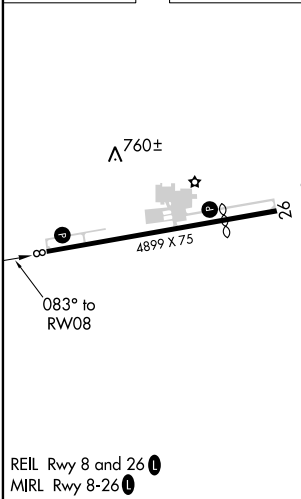
UNICOM
123.0 (CTAF) 1

MSA RW08 25 NM



Procedure NA for arrivals at BOONE via V422 southeastbound.

ELEV 634 TDZE 634



REIL Rwy 8 and 26 1
 MIRL Rwy 8-26 1

5 NM Holding Pattern	VGSi and descent angles not coincident (VGSi Angle 3.50/TCH 44)		2300	FIPEX
	FIPEX		SOCOS	
2300	← 263°	083° →	2300	083°
		6 NM	5 NM	
		3.04° TCH 41		RW08
CATEGORY	A	B	C	D
LNAV MDA	1080-1	446 (500-1)	NA	
CIRCLING	1200-1	566 (600-1)	NA	

EC-2, 30 JAN 2020 to 27 FEB 2020

EC-2, 30 JAN 2020 to 27 FEB 2020