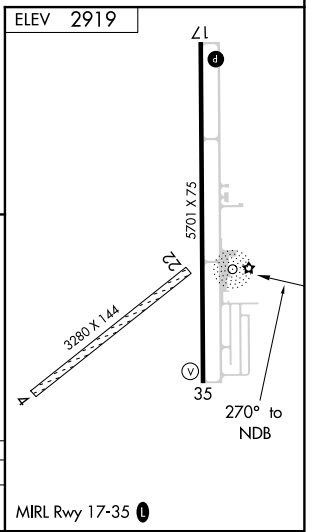
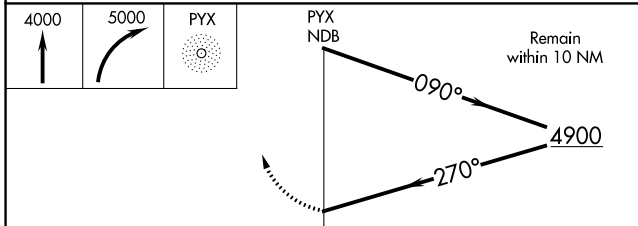
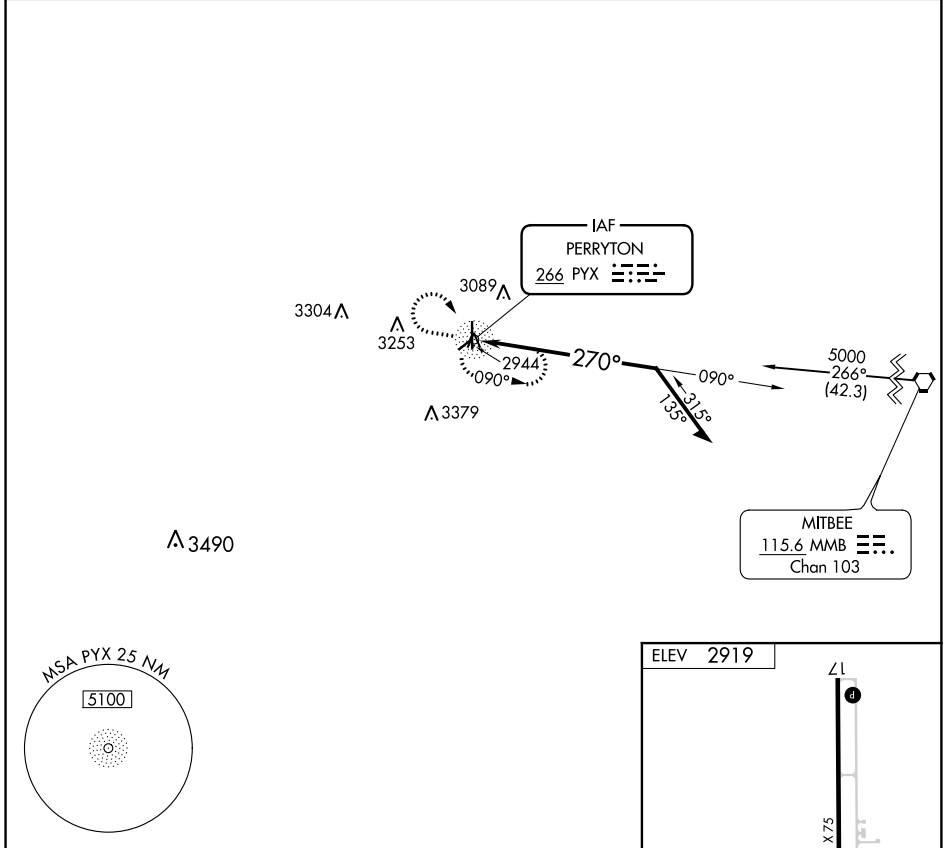


NDB PYX 266	APP CRS 270°	Rwy Idg TDZE Apt Elev	N/A N/A 2919
-----------------------	------------------------	-----------------------------	---

NDB-A
PERRYTON OCHILTREE COUNTY (PYX)

▽ When local altimeter setting not received, use Gage altimeter setting and increase all MDA 220 feet and Cat B visibility 1/4 mile. Circling NA to Rwy 4 and 22.
▲ NA MISSED APPROACH: Climb to 4000 then climbing right turn to 5000 direct PYX NDB and hold.

AWOS-3 118.175	KANSAS CITY CENTER 126.95 379.2	UNICOM 122.8 (CTAF) 0
--------------------------	---	---------------------------------



CATEGORY	A	B	C	D
C CIRCLING	3460-1 542 (600-1)	3580-1 662 (700-1)	NA	

SC-2, 30 JAN 2020 to 27 FEB 2020

SC-2, 30 JAN 2020 to 27 FEB 2020