

APP CRS  
**325°**

Rwy Idg **4001**  
TDZE **1704**  
Apt Elev **1704**

# RNAV (GPS) RWY 32

KINGS LAND O'LAKES (L.N.L.)

**⚠** If local altimeter setting not received, use Eagle River Union altimeter setting and increase all MDAs 40 feet.  
**⚠** DME/DME RNP-0.3 NA. Helicopter visibility reduction below 1 SM NA. Circling NA to Rwy 5 and 23. Straight-in Rwy 32 NA at night, Circling Rwy 32 NA at night.

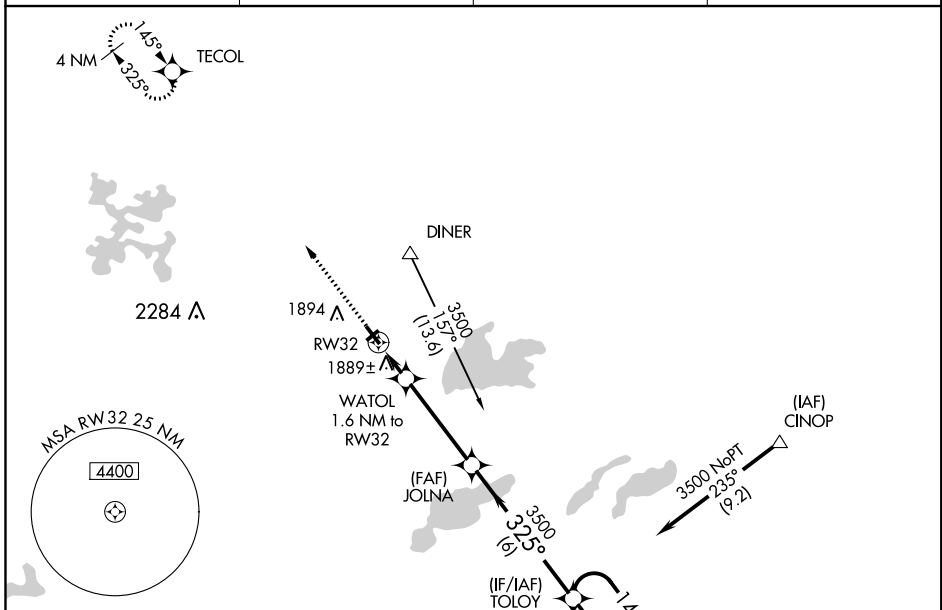
MISSED APPROACH: Climb to 3500 direct TECOL and hold.

AWOS-3  
**119.525**

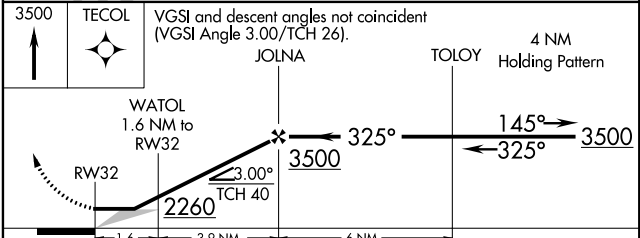
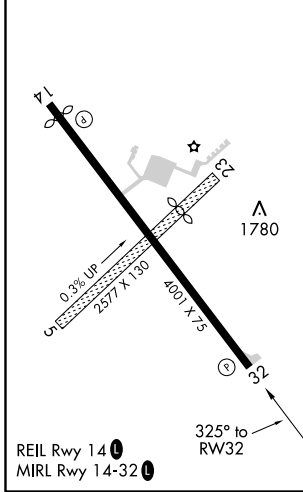
MINNEAPOLIS CENTER  
**133.65 281.5**

GCO  
**121.725**

UNICOM  
**122.8 (CTAF) 0**



ELEV 1704 | TDZE 1704



CATEGORY	A	B	C	D
RNAV MDA	2140-1	436 (500-1)	2140-1¼ 436 (500-1¼)	NA
CIRCLING	2200-1 496 (500-1)	2240-1 536 (600-1)	2240-1½ 536 (600-1½)	NA

EC-3, 30 JAN 2020 to 27 FEB 2020

EC-3, 30 JAN 2020 to 27 FEB 2020