

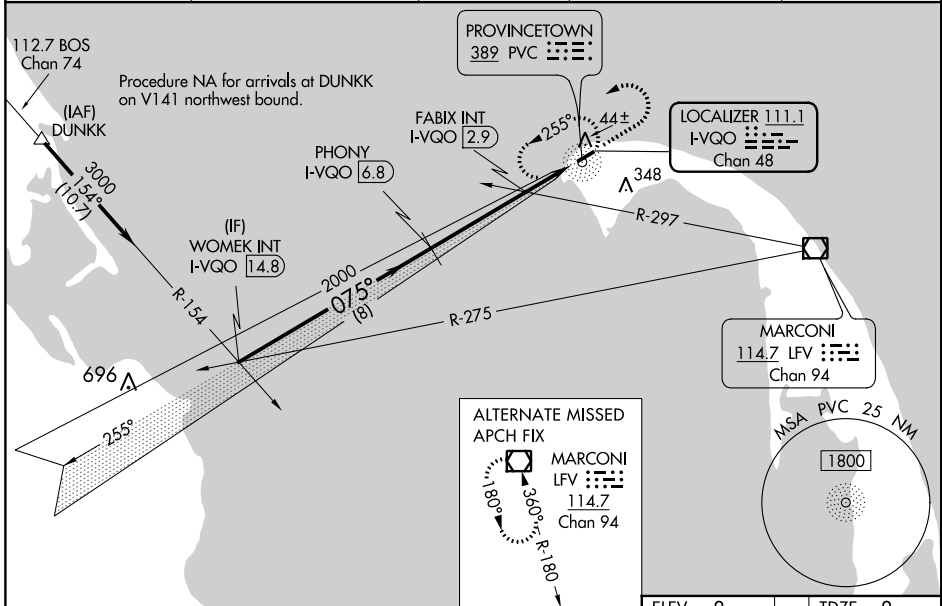
LOC/DME I-VQO 111.1 Chan 48	APP CRS 075°	Rwy Idg 3502 TDZE 8 Apt Elev 8
---	------------------------	---

ILS or LOC RWY 7

PROVINCETOWN MUNI (PVC)

DME required for LOC only, ADF.		MALSF	MISSED APPROACH: Climb to 800 then climbing left turn to 2000 direct PVC NDB and hold, continue climb-in-hold to 2000.
<p>NA Inop table does not apply to S-ILS 7. When local altimeter setting not received, use Hyannis altimeter setting and increase all DA to 271 and all MDA 80 feet: increase S-LOC 7 and FABIX fix minimums S-LOC 7 all Cats visibility 1/4 SM. VDP NA when using Hyannis altimeter setting. For inop ALS when using Hyannis altimeter setting, increase S-ILS 7 all Cats visibility to 1/8 SM.</p>			

AWOS-3PT 119.025	BOSTON APP CON * 118.2	CLNC DEL 120.65	UNICOM 122.8 (CTAF)	122.85
----------------------------	----------------------------------	---------------------------	-------------------------------	---------------



ELEV	8	TDZE	8
*LOC only			
075° 6.1 NM from FAF			
REIL Rwy 25 HIRL Rwy 7-25			
FAF to MAP 6.1 NM			
Knots	60	90	120 150 180
Min:Sec	6:06	4:04	3:03 2:26 2:02

NE-1, 30 JAN 2020 to 27 FEB 2020

NE-1, 30 JAN 2020 to 27 FEB 2020