

WAAS CH 70624 W26A	APP CRS 259°	Rwy Idg TDZE Apt Elev	4151 1005 1014
--	------------------------	-----------------------------	---

RNAV (GPS) RWY 26L

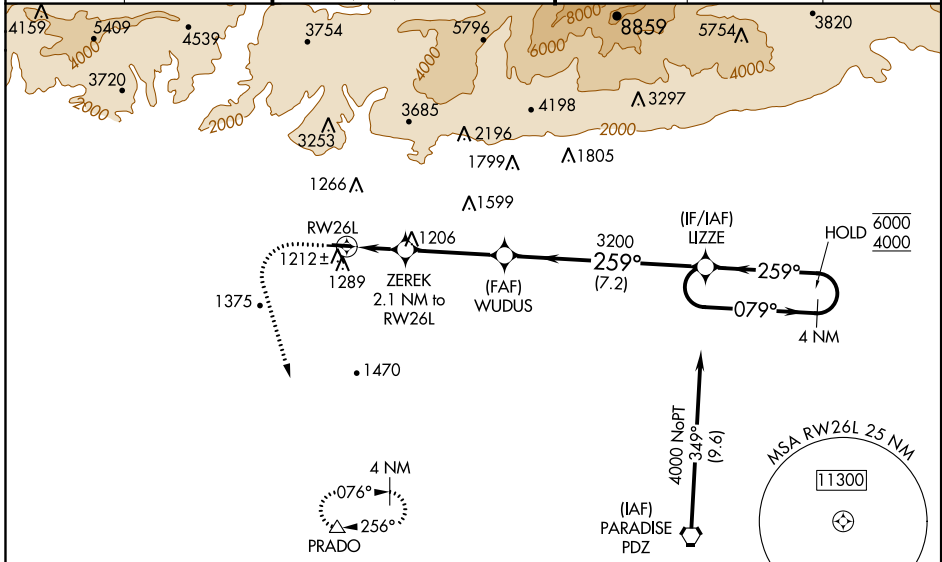
BRACKETT FIELD (POC)

RNP APCH.

⚠ Baro-VNAV and VDP NA when using Ontario altimeter setting. Rwy 26L helicopter visibility reduction below $\frac{3}{4}$ SM NA. For uncompensated Baro-VNAV systems, LNAV/VNAV NA below -17°C or above 54°C . When local altimeter setting not received, use Ontario Intl altimeter setting and increase all DA 32 feet and all MDA 40 feet, increase LPV and LNAV/VNAV all Cats visibility $\frac{1}{8}$ SM. Circling NA for Cat C north of Rwy 8L-26R. Circling to Rwy 8L NA at night. When Circling to Rwy 8R at night, operational VGSI glidepath until threshold.

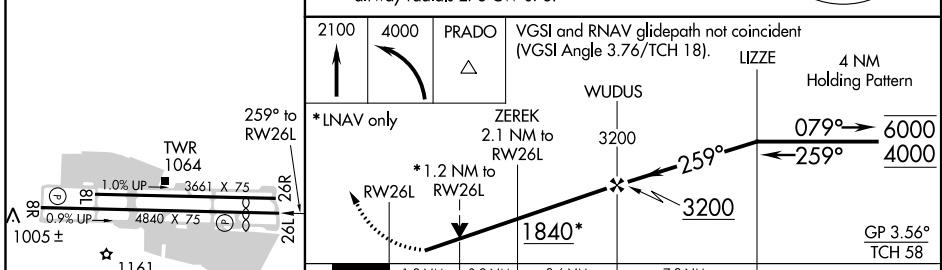
⚠ MISSED APPROACH: Climb to 2100 then climbing left turn to 4000 direct PRADO and hold.

ATIS 124.4	SOCAL APP CON 125.5 318.2	BRACKETT TOWER* RWY 8R/26L 118.2 (CTAF)	RWY 8L/26R 133.3	GND CON 125.0	CLNC DEL 121.875	UNICOM 122.95
----------------------	-------------------------------------	--	----------------------------	-------------------------	----------------------------	-------------------------



ELEV 1014	TDZE 1005
-----------	-----------

Procedure NA for arrivals on PDZ VORTAC airway radials 278 CW 078.



CATEGORY	A	B	C	D
LPV DA	1305- $\frac{7}{8}$	300 (300- $\frac{7}{8}$)		NA
LNAV/ VNAV DA	1444-1 $\frac{1}{4}$	439 (500-1 $\frac{1}{4}$)		NA
LNAV MDA	1500-1	495 (500-1)	1500-1 $\frac{3}{8}$ 495 (500-1 $\frac{3}{8}$)	NA
☑ CIRCLING	1680-1	666 (700-1)	1760-2 $\frac{1}{4}$ 746 (800-2 $\frac{1}{4}$)	NA

SW-3, 30 JAN 2020 to 27 FEB 2020

SW-3, 30 JAN 2020 to 27 FEB 2020