

NDB-B

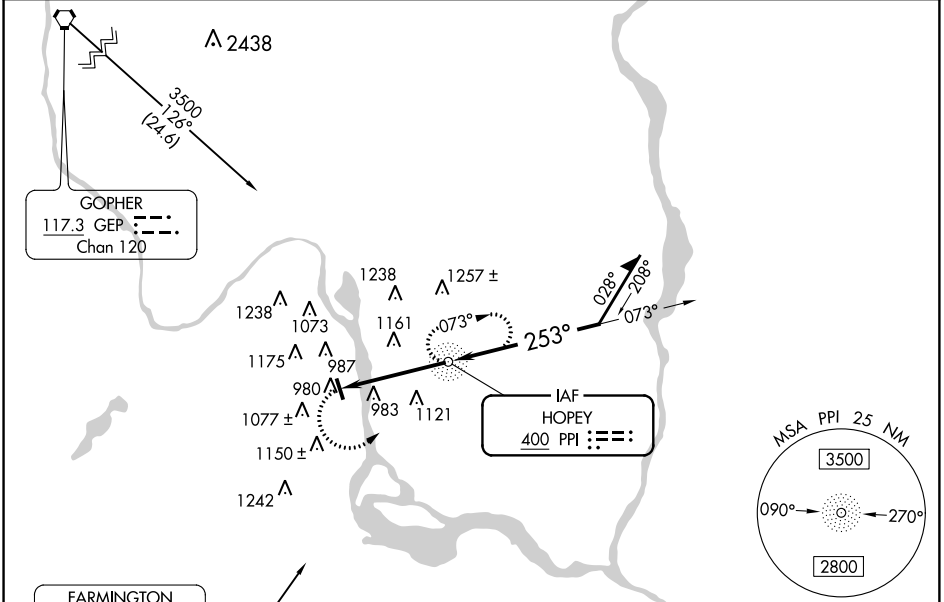
SOUTH ST PAUL MUNI-RICHARD E FLEMING FIELD (SGS)

NDB PPI 400	APP CRS 253°	Rwy Idg TDZE Apt Elev	N/A N/A 821
-----------------------	------------------------	-----------------------------	--

NA
When local altimeter setting not received, use Minneapolis
Wold-Chamberlain Intl altimeter setting and increase all
MDA 40 feet. Increase Cat C/D visibility ¼ mile.

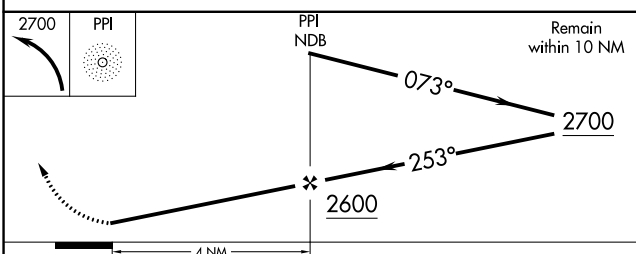
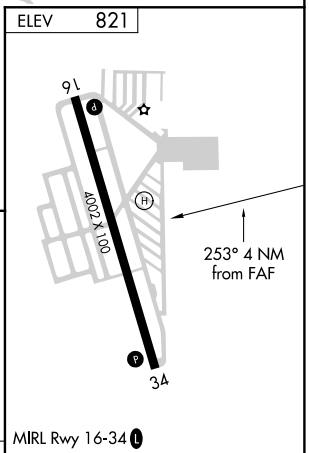
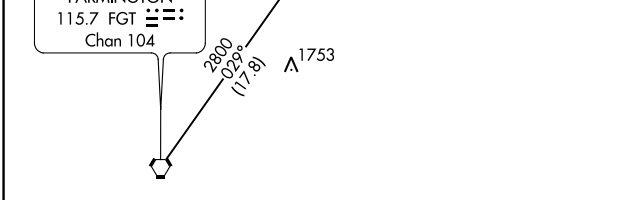
MISSED APPROACH: Climbing left
turn to 2700 direct PPI NDB and hold,
continue climb-in-hold to 2700.

AWOS-3 119.425	MINNEAPOLIS APP CON 121.2 335.65	CLNC DEL 118.2	UNICOM 122.7 (CTAF)
--------------------------	--	--------------------------	-------------------------------



NC-1, 30 JAN 2020 to 27 FEB 2020

NC-1, 30 JAN 2020 to 27 FEB 2020



CATEGORY	FAF to MAP 4 NM					
	A	B	C	D		
CIRCLING	1520-1 699 (700-1)	1540-1 719 (800-1)	1540-2 719 (800-2)	1620-2½ 799 (800-2½)		
	Knots	60	90	120	150	180
	Min:Sec	4:00	2:40	2:00	1:36	1:20

NDB-B