

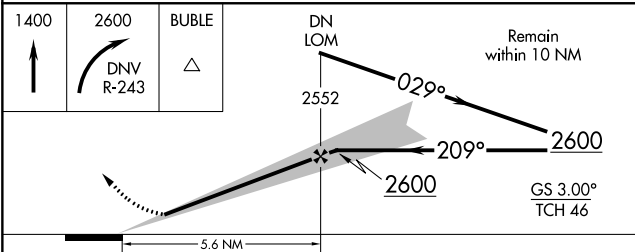
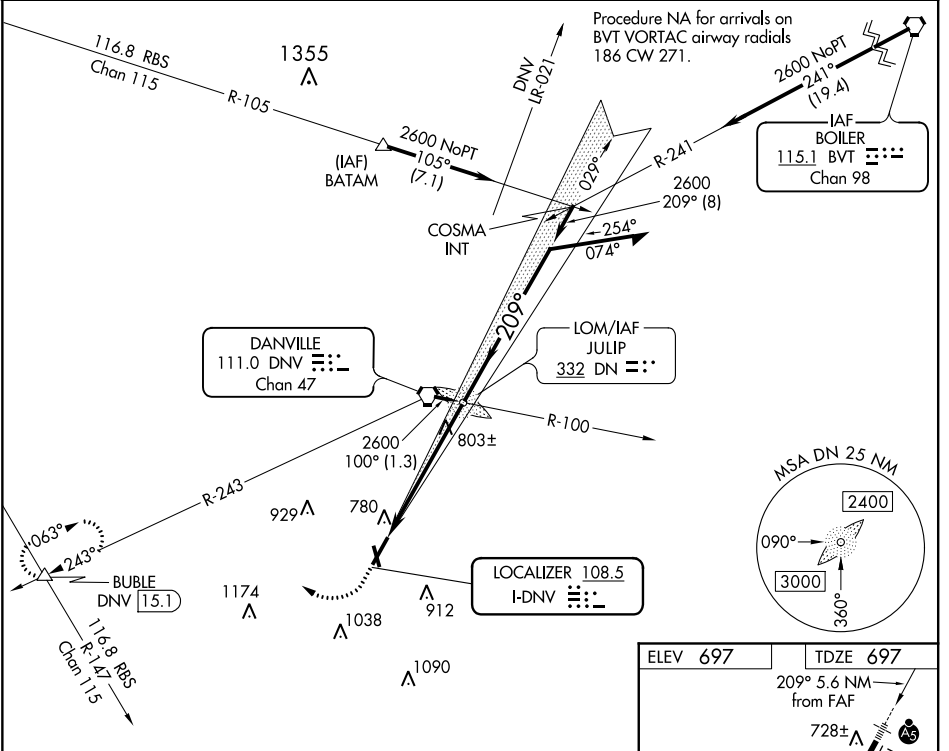
LOC I-DNV 108.5	APP CRS 209°	Rwy Idg 6006
		TDZE 697
		Apt Elev 697

ILS or LOC RWY 21

VERMILION RGNL (DNV)

<p>▼ If local altimeter not received, use University of Illinois-Willard altimeter setting, and increase all DAs/MDAs 100 feet.</p> <p>▲ MALSR</p>	<p>MISSED APPROACH: Climb to 1400, then climbing right turn to 2600 via DNV R-243 to BUBLE INT and hold.</p>
--	--

AWOS-3 119.275	CHAMPAIGN APP CON * 121.35 285.65	CLNC DEL 121.7	UNICOM 122.7 (CTAF) 0
--------------------------	---	--------------------------	---------------------------------



CATEGORY	A	B	C	D
S-ILS 21	897-1/2 200 (200-1/2)			
S-LOC 21	1080-1/2 383 (400-1/2)		1080-3/4 383 (400-3/4)	
CIRCLING	1160-1 463 (500-1)		1160-1 1/2 463 (500-1 1/2)	
			1260-2 563 (600-2)	

ELEV 697	TDZE 697
209° 5.6 NM from FAF	
728± A	
717± A	
718 A	
726 A	
3696 X 100	
0.8% Up	
0.6% Up	
34	
3	
600 X 100	
HIRL Rwy 3-21	
MIRL Rwy 16-34	
REIL Rws 16 and 34	
FAF to MAP 5.6 NM	
Knots	60 90 120 150 180
Min:Sec	5:36 3:44 2:48 2:14 1:52

EC-3, 30 JAN 2020 to 27 FEB 2020

EC-3, 30 JAN 2020 to 27 FEB 2020