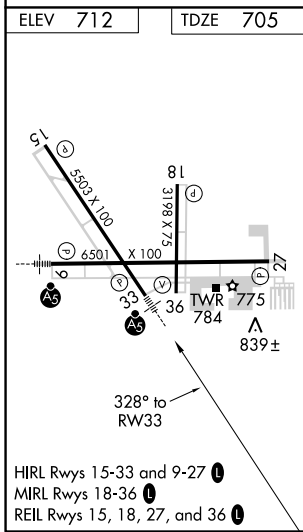
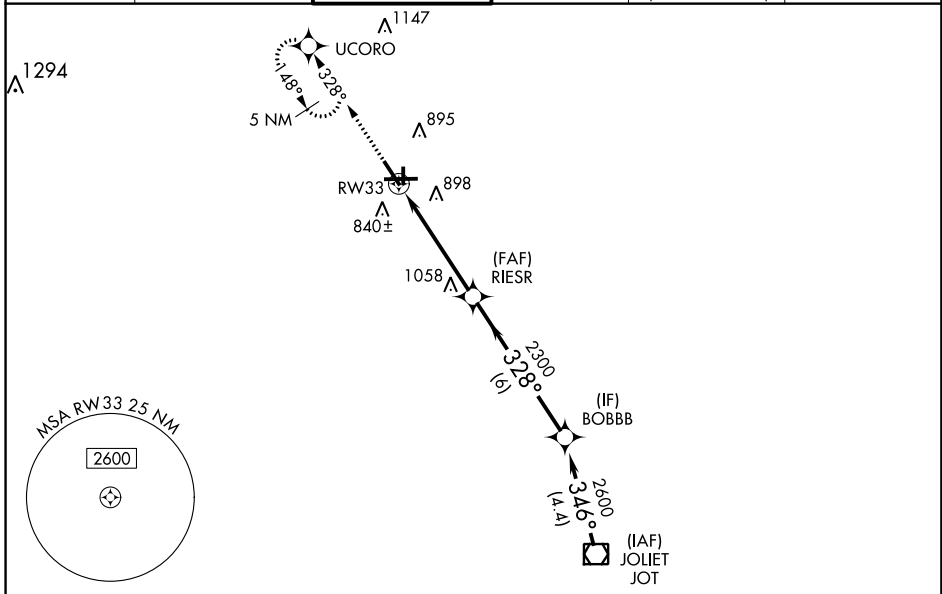


WAAS CH 49105 W33A	APP CRS 328°	Rwy Idg 5503 TDZE 705 Apt Elev 712
--	------------------------	---

RNAV (GPS) RWY 33

AURORA MUNI (A.R.R.)

RNP APCH.				MALSR 		MISSED APPROACH: Climb to 3000 direct UCORO and hold, continue climb-in-hold to 3000.						
For uncompensated Baro-VNAV systems, LNAV/VNAV NA below -16°C or above 54°C. For inop MALSR, increase LPV visibility to 1/4 SM all Cats, LNAV Cats A/B visibility to 1 SM.	ATIS 125.85		CHICAGO APP CON 133.5 349.0		AURORA TOWER * 120.6 (CTAF)		GND CON 121.7		CLNC DEL 121.7 <small>(When tower closed)</small>		UNICOM 122.95 123.5	



Procedure NA for arrival on JOT VOR/DME airway radials 314 CW 328.

3000 UCORO	BOBBB				JOT VOR/DME	
*LNAV only.	RIESR		2300		346°-2600	
	*1.3 NM to RWY33		2300		GP 3.00° TCH 48	
	1.3 NM		3.5 NM		6 NM	
					4.4 NM	
CATEGORY	A		B		C	
LPV DA	1042-3/4		337 (400-3/4)			
LNAV/VNAV DA	1194-1 1/4		489 (500-1 1/4)			
LNAV MDA	1140-3/4		435 (500-3/4)		1140-1 435 (500-1)	
<input checked="" type="checkbox"/> CIRCLING	1200-1		488 (500-1)		1200-1 1/2 488 (500-1 1/2)	
					1320-2 608 (700-2)	

EC-3, 30 JAN 2020 to 27 FEB 2020

EC-3, 30 JAN 2020 to 27 FEB 2020