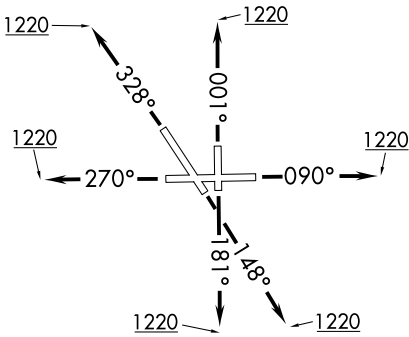


(ADELL6.ADELL) 20002

# ADELL SIX DEPARTURE (RNAV)

AL-5103 (FAA)

AURORA MUNI (ARR)  
CHICAGO/AURORA, ILLINOIS



**TOP ALTITUDE:**  
**3000**

ATIS  
125.85  
GND CON  
121.7  
AURORA TOWER ★  
120.6  
CHICAGO DEP CON  
133.5 349.0

### TAKEOFF MINIMUMS:

Rwys 9, 15, 18, 27, 33, 36: Standard.

NOTE: RADAR required.

NOTE: DME/DME/IRU or GPS required.

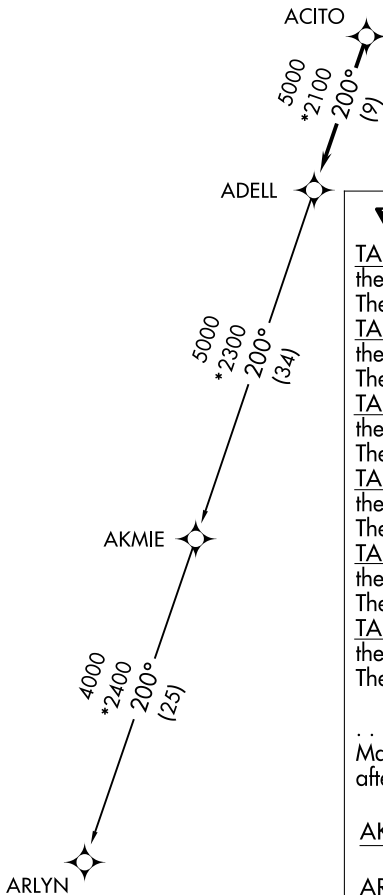
NOTE: RNAV 1.

NOTE: Turbojet departures maintain 250K until advised by ATC.

NOTE: AKMIE Transition: For aircraft inbound to BMI, SPI, PLA, or as assigned by ATC.

EC-3, 30 JAN 2020 to 27 FEB 2020

EC-3, 30 JAN 2020 to 27 FEB 2020



### DEPARTURE ROUTE DESCRIPTION

**TAKEOFF RUNWAY 9:** Climb heading 090° to 1220, then as assigned by ATC, for vectors to ACITO. Thence. . . .

**TAKEOFF RUNWAY 15:** Climb heading 148° to 1220, then as assigned by ATC, for vectors to ACITO. Thence. . . .

**TAKEOFF RUNWAY 18:** Climb heading 181° to 1220, then as assigned by ATC, for vectors to ACITO. Thence. . . .

**TAKEOFF RUNWAY 27:** Climb heading 270° to 1220, then as assigned by ATC, for vectors to ACITO. Thence. . . .

**TAKEOFF RUNWAY 33:** Climb heading 328° to 1220, then as assigned by ATC, for vectors to ACITO. Thence. . . .

**TAKEOFF RUNWAY 36:** Climb heading 001° to 1220, then as assigned by ATC, for vectors to ACITO. Thence. . . .

. . . . on track 200° to ADELL, then on (transition). Maintain 3000. Expect filed altitude 10 minutes after departure.

AKMIE TRANSITION (ADELL6.AKMIE):

ARLYN TRANSITION (ADELL6.ARLYN):

NOTE: Chart not to scale.

# ADELL SIX DEPARTURE (RNAV)

(ADELL6.ADELL) 10OCT19

CHICAGO/AURORA, ILLINOIS  
AURORA MUNI (ARR)