

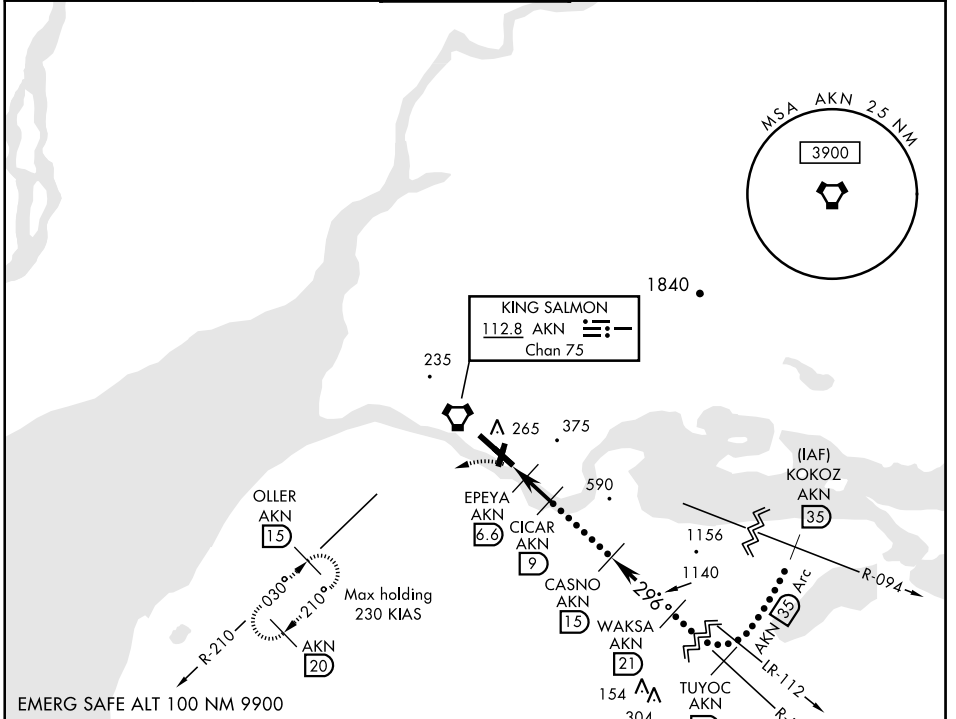
KING SALMON, ALASKA

HI-VOR/DME or TACAN RWY 30

VORTAC AKN 112.8 Chan 75 APCH CRS 296° Rwy ldg TDZE 8901 73 Arprt Elev 73 JAL-1237 [USAF] KING SALMON (PAKN)

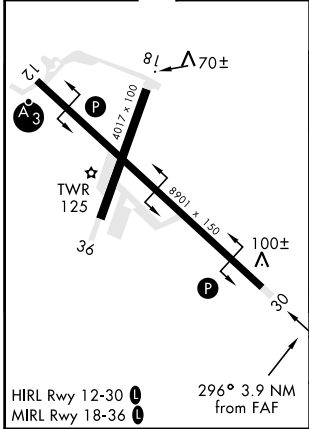
MISSED APPROACH: Climb to 500, then climbing left turn to 3000 via heading 222° and AKN VORTAC R-210 to OLLER/ AKN 15 DME and hold.

ATIS 128.8 ANCHORAGE CENTER 124.8 354.0 KING SALMON TOWER★ 118.3 279.5 GND CON 121.9 CTAF 121.9 352.05

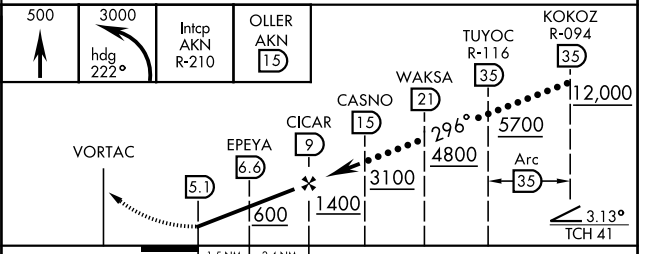


EMERG SAFE ALT 100 NM 9900

ELEV 73 TDZE 73



HIRL Rwy 12-30
MIRL Rwy 18-36



CATEGORY	C	D	E
S-30	420-1 347 (400-1)	420-1¼	347 (400-1¼)
CIRCLING	580-1½ 507 (600-1½)	640-2 567 (600-2)	720-2¼ 647 (800-2¼)

KING SALMON, ALASKA 58°41'N-156°39'W KING SALMON (PAKN)

Amtd 4 19171

HI-VOR/DME or TACAN RWY 30

AK, 30 JAN 2020 to 26 MAR 2020

AK, 30 JAN 2020 to 26 MAR 2020