


APP CRS	Rwy Idg	5320
046°	TDZE	16
	Apt Elev	17

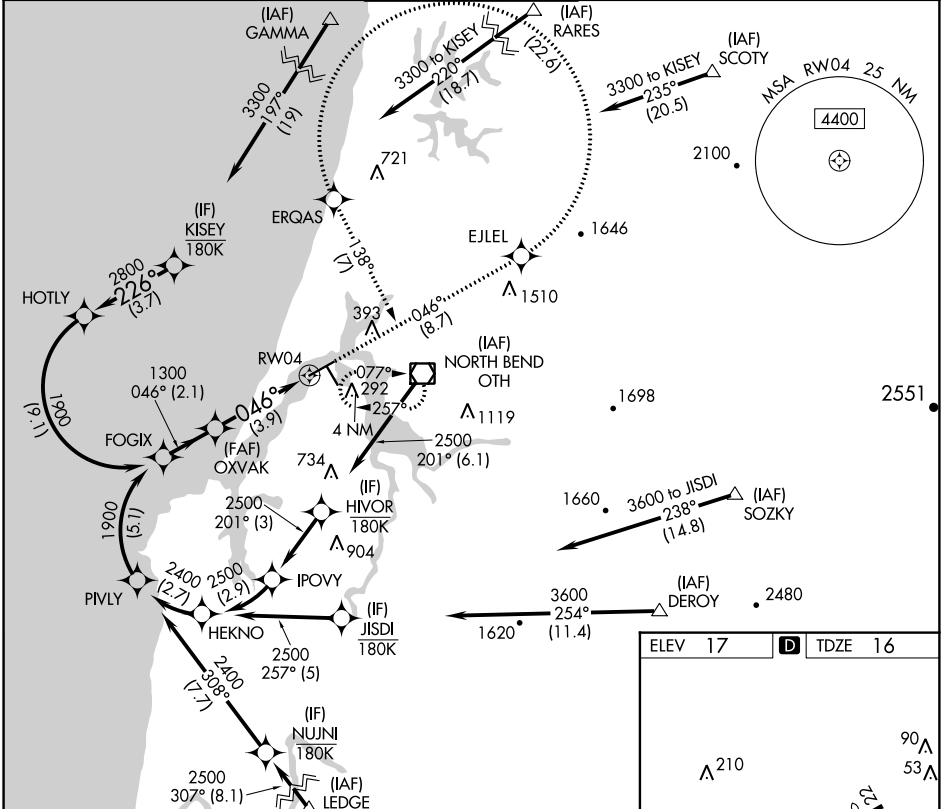
RNAV (RNP) Z RWY 4

SOUTHWEST OREGON RGNL (OTH)

RF required. GPS required. For inop MALS, increase RNP 0.30# all Cats visibility to 1½ mile. For uncompensated Baro-VNAV systems, procedure NA below -2°C (29°F) or above 54°C (130°F).
 * Missed approach requires a minimum climb of 400 feet per NM to 1200.
 # Missed approach requires a minimum climb of 255 feet per NM to 2400.

MALS  MISSED APPROACH: Climb to 3300 on track 046° to EJLEL, left turn to ERQAS, and on track 138° to OTH VOR/DME and hold.

AWOS-3PT 135.075	SEATTLE CENTER 127.55 254.35	NORTH BEND TOWER* 118.45 (CTAF)	MC MINNVILLE RADIO 122.4 255.4	GND CON 127.1
----------------------------	--	--	--	-------------------------



NW-1, 30 JAN 2020 to 27 FEB 2020

NW-1, 30 JAN 2020 to 27 FEB 2020

See planview for multiple IF locations.

FOGIX	OXVAK	EJLEL	ERQAS	OTH
1900	1300	↑ fr 046°	↻ fr 138°	◻
GP 3.00°				
TCH 51				
	2.1 NM	3.9 NM		
CATEGORY	A	B	C	D
RNP 0.11 DA*		309-½	293 (300-½)	
RNP 0.30 DA #		477-1⅛	461 (500-1⅛)	
RNP 0.30 DA		569-1⅜	553 (600-1⅜)	

AUTHORIZATION REQUIRED

