

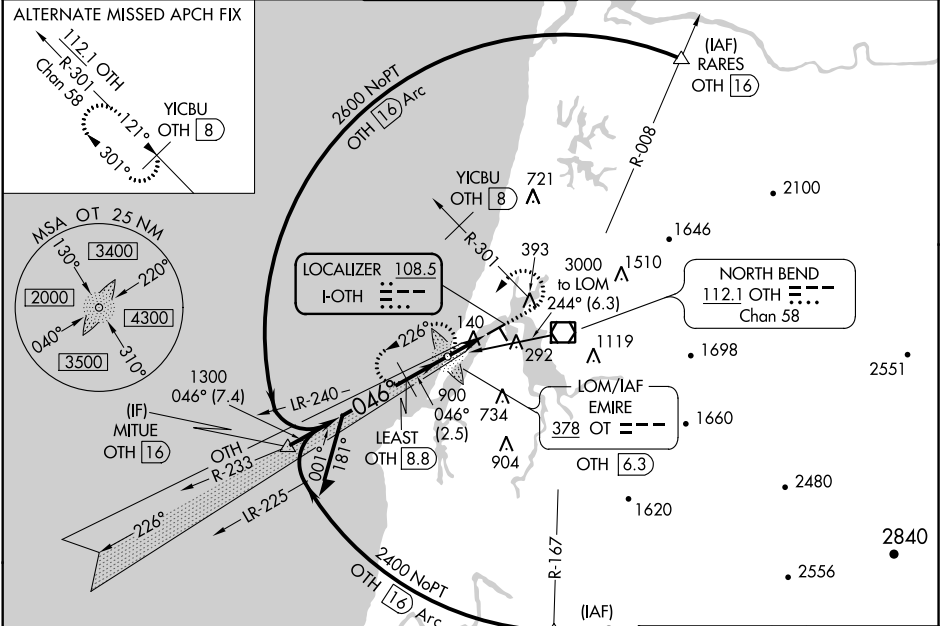
LOC I-OTH 108.5	APP CRS 046°	Rwy Idg 5320
		TDZE 16
		Apt Elev 17

ILS or LOC RWY 4

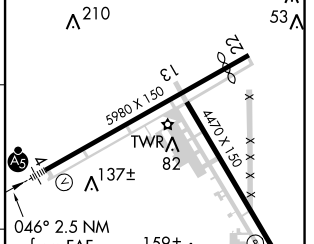
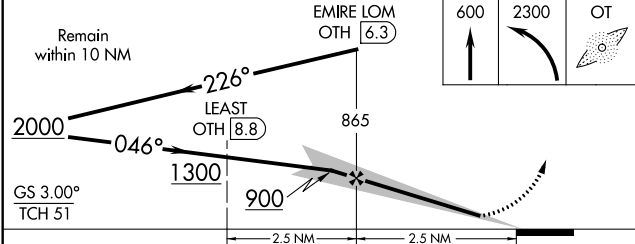
SOUTHWEST OREGON RGNL (OTH)

<p>⚠ Night landing: Rwy 31 NA. For inop MALSR, increase S-ILS 4 all Cats visibility to ½ mile, S-LOC 4 Cat C/D visibility to 1½ mile. ADF and DME required.</p> <p>* Missed approach requires minimum climb of 248 feet per NM to 800.</p>	<p>MALSR</p> <p>MISSED APPROACH: Climb to 600 then climbing left turn to 2300 direct EMIRE LOM and hold, continue climb-in-hold to 2300.</p>
---	---

AWOS-3PT 135.075	SEATTLE CENTER 127.55 254.35	NORTH BEND TOWER* 118.45 (CTAF)	MC MINNVILLE RADIO 122.4 255.4	GND CON 127.1
----------------------------	--	--	--	-------------------------



ADF AND DME REQUIRED	ELEV 17	D TDZE 16
----------------------	---------	------------------



CATEGORY	A	B	C	D
S-ILS 4*		216-½	200 (200-½)	
S-ILS 4		278-½	262 (300-½)	
S-LOC 4	400-½	384 (400-½)	400-¾	384 (400-¾)
C CIRCLING	680-1 663 (700-1)	820-1 803 (900-1)	1100-3 1083 (1100-3)	1180-3 1163 (1200-3)

FACILITY	Knots	60	90	120	150	180
	Min:Sec	2:30	1:40	1:15	1:00	0:50

NW-1, 30 JAN 2020 to 27 FEB 2020

NW-1, 30 JAN 2020 to 27 FEB 2020