

WAAS CH <b>61029</b> <b>W05A</b>	APP CRS <b>049°</b>	Rwy Idg TDZE Apt Elev	<b>4386</b> <b>2283</b> <b>2284</b>
--	------------------------	-----------------------------	---

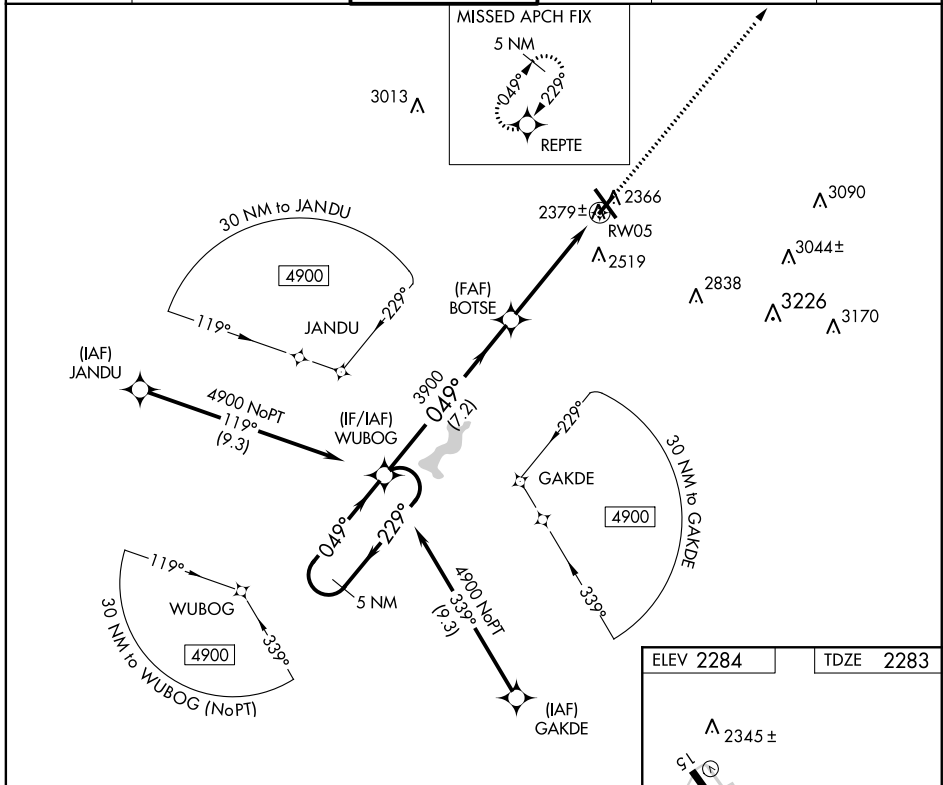
# RNAV (GPS) RWY 5

JOHN MURTHA JOHNSTOWN-CAMBRIA COUNTY (JST)

▼ When local altimeter setting not received, procedure NA. For uncompensated Baro-VNAV systems, LNAV/VNAV NA below -19°C (-2°F) or above 29°C (84°F). When VGSI inop, Straight-in/Circling Rwy 5 procedure NA at night. DME/DME RNP-0.3 NA. Visibility reduction by helicopters NA.

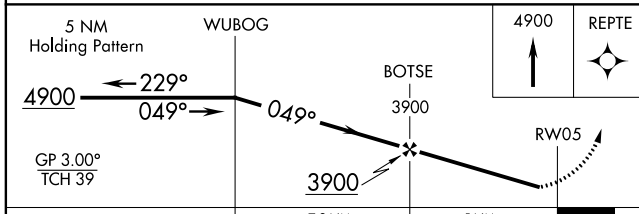
MISSED APPROACH: Climb to 4900 direct REPTE and hold.

ATIS <b>118.325</b>	JOHNSTOWN APP CON ★ <b>121.2 299.2</b>	JOHNSTOWN TOWER ★ <b>125.75 (CTAF) 0</b>	GND CON <b>121.6</b>	CLNC DEL <b>126.85 235.775</b>	UNICOM <b>122.95</b>
------------------------	---	---	-------------------------	-----------------------------------	-------------------------

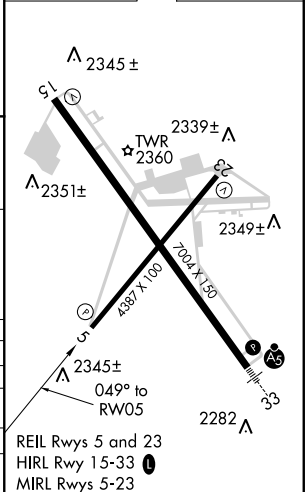


NE-4, 30 JAN 2020 to 27 FEB 2020

NE-4, 30 JAN 2020 to 27 FEB 2020



ELEV 2284	TDZE 2283
-----------	-----------



CATEGORY	A	B	C	D
LPV DA		2533-1	250 (300-1)	
LNAV/VNAV DA		2573-1	290 (300-1)	
LNAV MDA		2640-1	357 (400-1)	
CIRCLING	2700-1 416 (500-1)	2740-1 456 (500-1)	2880-1½ 596 (600-1½)	2880-2 596 (600-2)

REIL Rwy 5 and 23  
HIRL Rwy 15-33  
MIRL Rwy 5-23

# RNAV (GPS) RWY 5