

WAAS CH 56315 W34A	APP CRS 337°	Rwy Idg 7203 TDZE 796 Apt Elev 799
--	------------------------	---

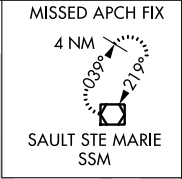
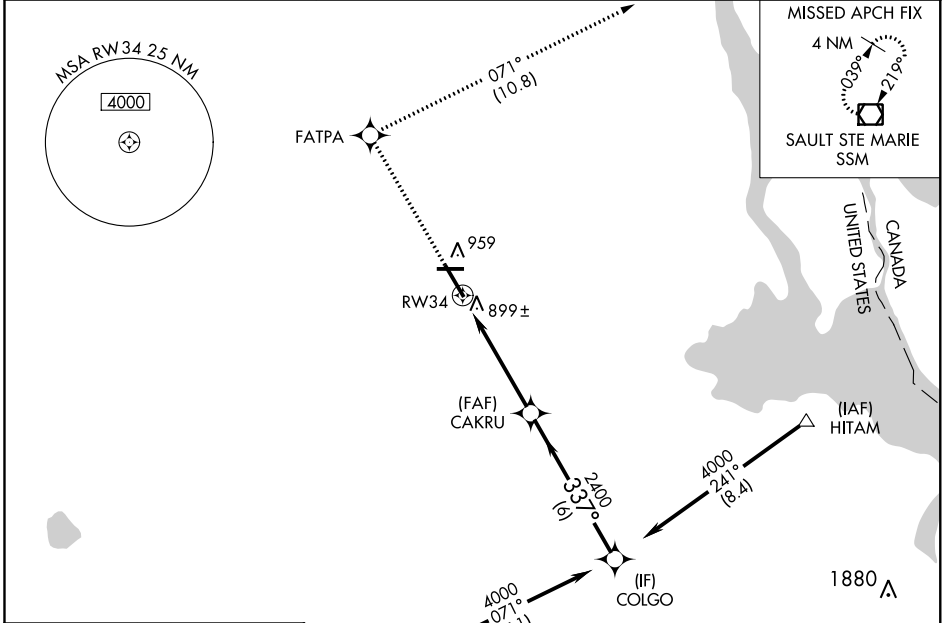
RNAV (GPS) RWY 34

CHIPPEWA COUNTY INTL (CIU)

⚠ For uncompensated Baro-VNAV systems, LNAV/VNAV NA below -16°C (4°F) or above 54°C (130°F). DME/DME RNP-0.3 NA. When local altimeter setting not received, use Sault Ste Marie Muni/Sanderson Field altimeter setting and increase all DA 45 feet and all MDA 60 feet; increase LNAV Cat D visibility ¼ mile. Baro-VNAV and VDP NA when using Sault Ste Marie Muni/Sanderson Field altimeter setting.

MISSED APPROACH: Climb to 3000 direct FATPA and track 071° to SSM VOR/DME and hold.

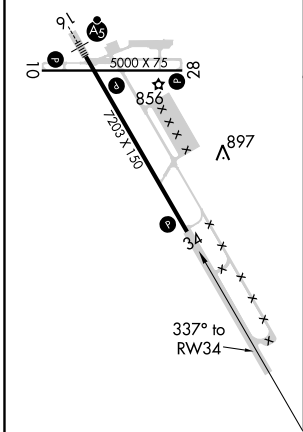
AWOS-3PT 127.575	TORONTO CENTER 132.65 344.5	UNICOM 123.0 (CTAF) 0
----------------------------	---------------------------------------	---------------------------------



EC-1, 30 JAN 2020 to 27 FEB 2020

EC-1, 30 JAN 2020 to 27 FEB 2020

ELEV 799	D	TDZE 796
----------	----------	----------



REIL Rws 10, 28 and 34
MIRL Rwy 10-28
HIRL Rwy 16-34

Procedure NA for arrival at PINES via V193 southbound.

COLGO	CAKRU	3000	FATPA	tr 071°	SSM
4000	2400				
GP 3.00° TCH 40		*1.2 NM to RWY 34		*LNAV only.	
6 NM		3.7 NM		1.2 NM	
CATEGORY	A	B	C	D	
LPV DA	1046-1		250 (300-1)		
LNAV/DA VNAV	1198-1½		402 (400-1½)		
LNAV MDA	1200-1	404 (400-1)	1200-1¼	404 (400-1¼)	
CIRCLING	1260-1	461 (500-1)	1260-1½	1360-2	561 (600-2)