

# TACAN Y RWY 15

TACAN BAB Chan 23	APCH CRS 153°	Rwy ldg 12,001	TDZE 113	Arpt Elev 113
----------------------	------------------	-------------------	-------------	------------------

AL-771 (USAF)

BEALE AFB (KBAB)

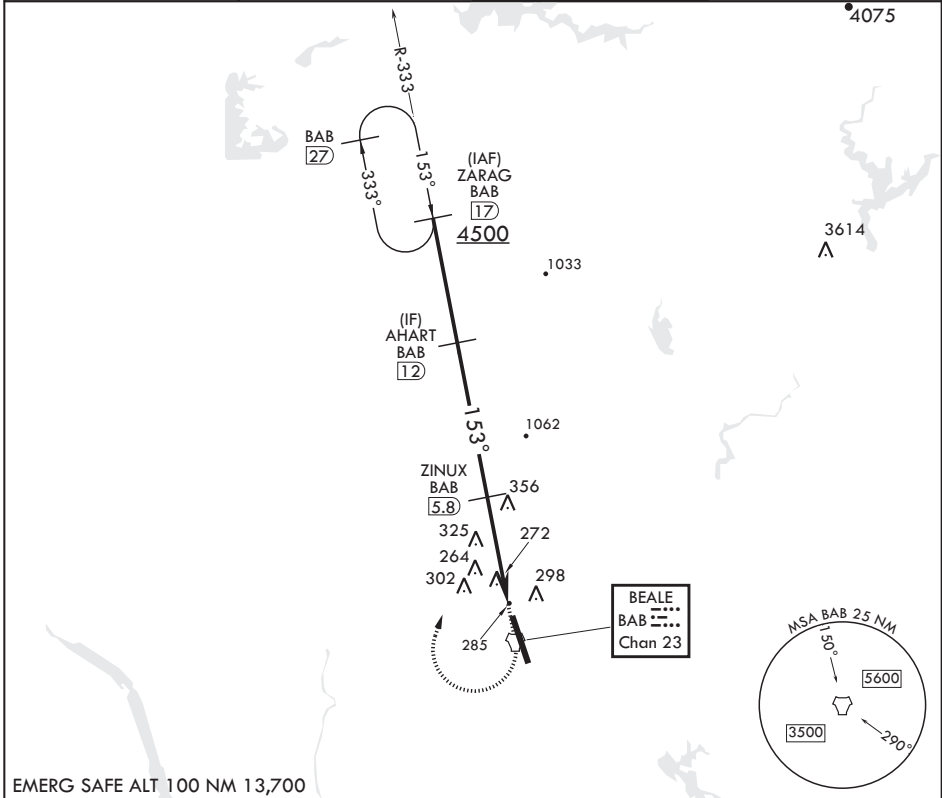
▼ \* When ALS inop, increase CAT AB RVR to 55 and vis to 1 mile, CAT CDE vis to 1 1/2 miles.  
 \*\* Circling not authorized E of Rwy 15-33.

ALSF-1



MISSED APPROACH: Climb to 4700 direct to BAB TACAN. Turn right to intercept BAB R-333 to ZARAG and hold, continue climb in hold to 4700.

ATIS* 124.55 273.5	NORCAL APP CON 125.4 259.1	TOWER* 119.4 284.75	GND CON 121.6 257.75
-----------------------	-------------------------------	------------------------	-------------------------



EMERG SAFE ALT 100 NM 13,700

ZARAG (17) 4500	AHART (12) 2600	ZINUX (5.8) 1600	AGEKE (1.5) 2.6	TACAN	
153°		2.83° ≥ TCH 53			
4700			BAB	BAB R-333	
ELEV 113			TDZE 113		
153° to TACAN			BCN TW		
4.3 NM			.5		
CATEGORY	A	B	C	D	E
S-15*	640/24	527 (600-1/2)	640/55	527 (600-1)	
CIRCLING**	640-1	527 (600-1)	640-1 1/2 527 (600-1 1/2)	680-2 567 (600-2)	840-2 1/2 727 (800-2 1/2)
HIRL Rwy 15-33			33		

# TACAN Y RWY 15

SW-2, 30 JAN 2020 to 27 FEB 2020

SW-2, 30 JAN 2020 to 27 FEB 2020