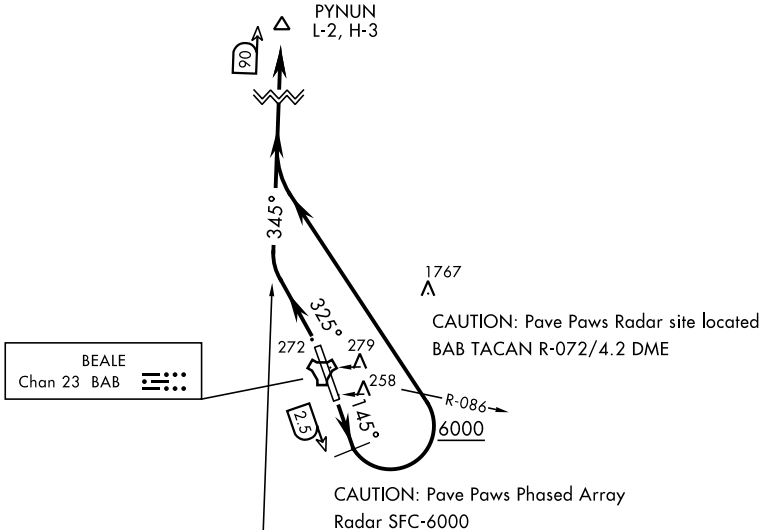


ATIS ★  
124.55 273.5  
GND CON  
121.6 257.75  
BEALE TOWER ★  
119.4 284.75  
NORCAL DEP CON  
125.4 259.1

SHL-771 [USAF]

PYNUN  
L-2, H-3



BEALE  
Chan 23 BAB

SACRAMENTO  
115.2 SAC  
Chan 99

CAUTION: Pave Paws Radar site located  
BAB TACAN R-072/4.2 DME

CAUTION: Pave Paws Phased Array  
Radar SFC-6000

FOR USE BY  
9 RW AIRCRAFT ONLY

Ⓒ to 3400  
Ⓓ to 6000 \* Minimum Climb Rate † ATC Climb Rate

Rwy	Knots	60	120	180	240	300	360
*15 Ⓒ	V/V(fpm)	227	454	681	908	1135	1362
†15 Ⓓ	V/V(fpm)	534	1068	1602	2136	2670	3204

DEPARTURE ROUTE DESCRIPTION

TAKE-OFF RWY 15: Fly heading 145° until BAB TACAN 2.5 DME, turn left intercept SAC VORTAC R-345 to PYNUN. Cross BAB R-086 at or above 6000. Then via assigned route.

TAKE-OFF RWY 33: Fly heading 325° intercept SAC VORTAC R-345 to PYNUN. Then via assigned route.

SW-2, 30 JAN 2020 to 27 FEB 2020

SW-2, 30 JAN 2020 to 27 FEB 2020