

MARYSVILLE, CALIFORNIA

HI-ILS or LOC Z RWY 33

LOC I-MIZ 109.5	APCH CRS 325°	Rwy ldg 12,001
		TDZE 105
		Arprt Elev 113

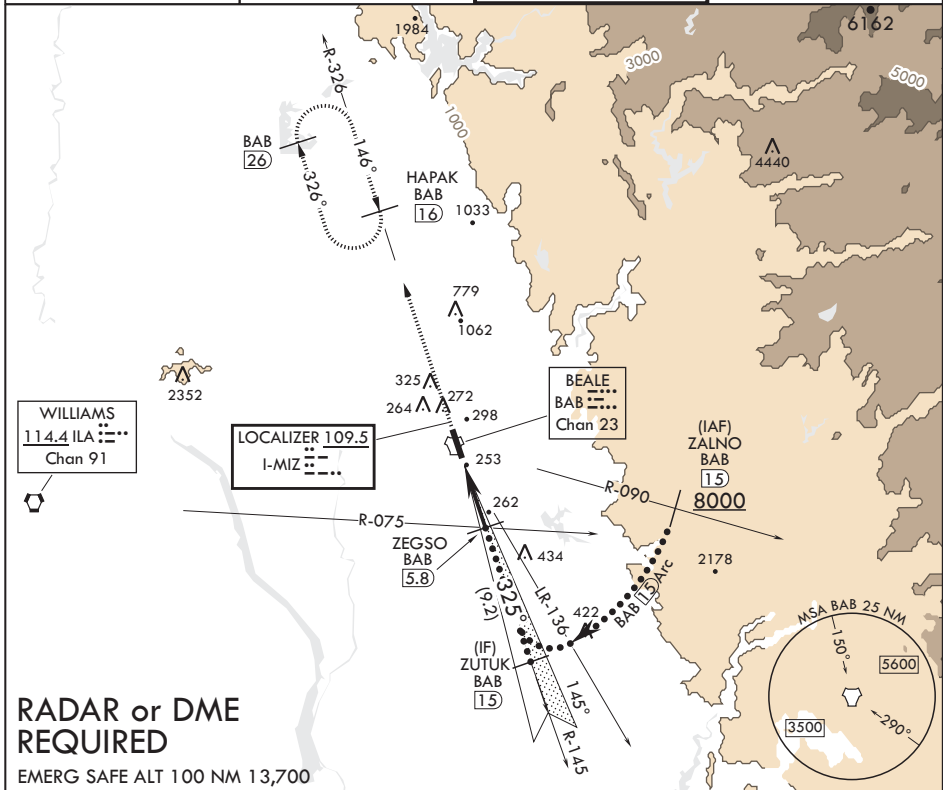
JAL-771 (USAF)

BEALE AFB (KBAB)

* When ALS inop, increase CAT CDE RVR to 40 and vis to 3/4 mile.
 ** When ALS inop, increase CAT CDE RVR to 60 vis to 1 1/8 miles.
 *** Circling not authorized E of Rwy 15-33.

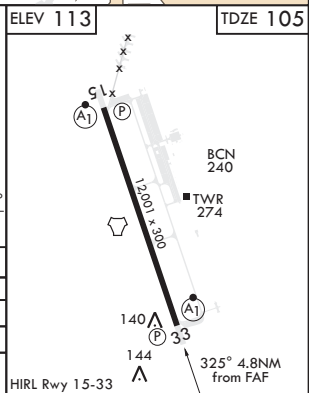
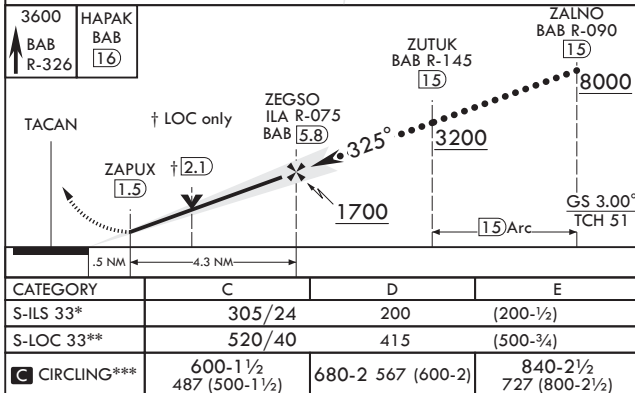
ALSF-1
 MISSED APPROACH: Climb to 3600 intercept BAB R-326 to HAPAK and hold.

ATIS* 124.55 273.5	NORCAL APP CON 125.4 259.1	TOWER* 119.4 284.75	GND CON 121.6 257.75
------------------------------	--------------------------------------	-------------------------------	--------------------------------



RADAR or DME REQUIRED

EMERG SAFE ALT 100 NM 13,700



MARYSVILLE, CALIFORNIA

39°08'N - 121°26'W

BEALE AFB (KBAB)

Amdt 5 20JUL17

HI-ILS or LOC Z RWY 33

SW-2, 30 JAN 2020 to 27 FEB 2020

SW-2, 30 JAN 2020 to 27 FEB 2020