

# SWVAY FOUR ARRIVAL (RNAV)

DALLAS, TEXAS

SC-2, 30 JAN 2020 to 27 FEB 2020

ADDITION ATIS  
133.4  
DALLAS EXECUTIVE ATIS  
126.35  
DALLAS LOVE FIELD ATIS  
120.15  
REGIONAL APP CON  
135.975 379.9

NOTE: RADAR required.

NOTE: RNAV 1.

NOTE: DME/DME/IRU or GPS required.

NOTE: DAL ARRIVALS: Props only. Turboprop aircraft file and expect the BACHR or DRYYE RNAV STARS.

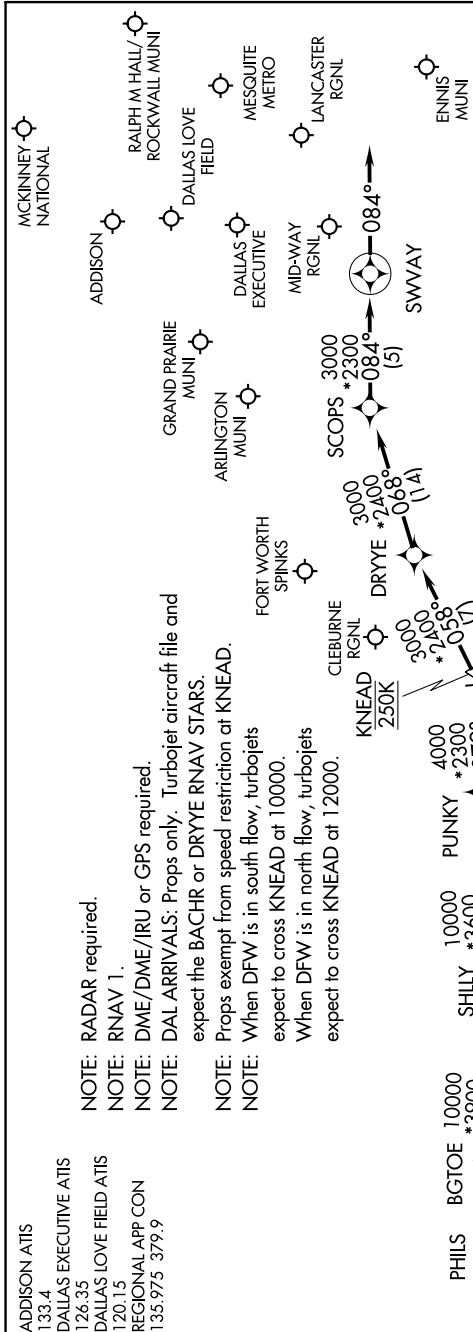
NOTE: Props exempt from speed restriction at KNEAD.

NOTE: When DFW is in south flow, turboprops expect to cross KNEAD at 10000.

NOTE: When DFW is in north flow, turboprops expect to cross KNEAD at 12000.

NOTE: When DFW is in south flow, turboprops expect to cross KNEAD at 10000.

NOTE: When DFW is in north flow, turboprops expect to cross KNEAD at 12000.



## ARRIVAL ROUTE DESCRIPTION

BGTOE TRANSITION (BGTOE.SWVAY4)

DITSY TRANSITION (DITSY.SWVAY4)

FRSTI TRANSITION (FRSTI.SWVAY4): (For ACT and GRK Terminal Area departures only)

SHILLY TRANSITION (SHILLY.SWVAY4): (For ABI Terminal Area departures only)

From KNEAD on track 058° to DRYYE, then on track 068° to SCOPES, then on track 084° to SWVAY, then on track 084°. Expect RADAR vectors to final approach course.

NOTE: Chart not to scale.

# SWVAY FOUR ARRIVAL (RNAV)

(KNEAD.SWVAY4) 26MAY16

DALLAS, TEXAS

SC-2, 30 JAN 2020 to 27 FEB 2020