

# KUSSO SIX DEPARTURE (RNAV)

SC-2, 30 JAN 2020 to 27 FEB 2020

## TOP ALTITUDE: ASSIGNED BY ATC

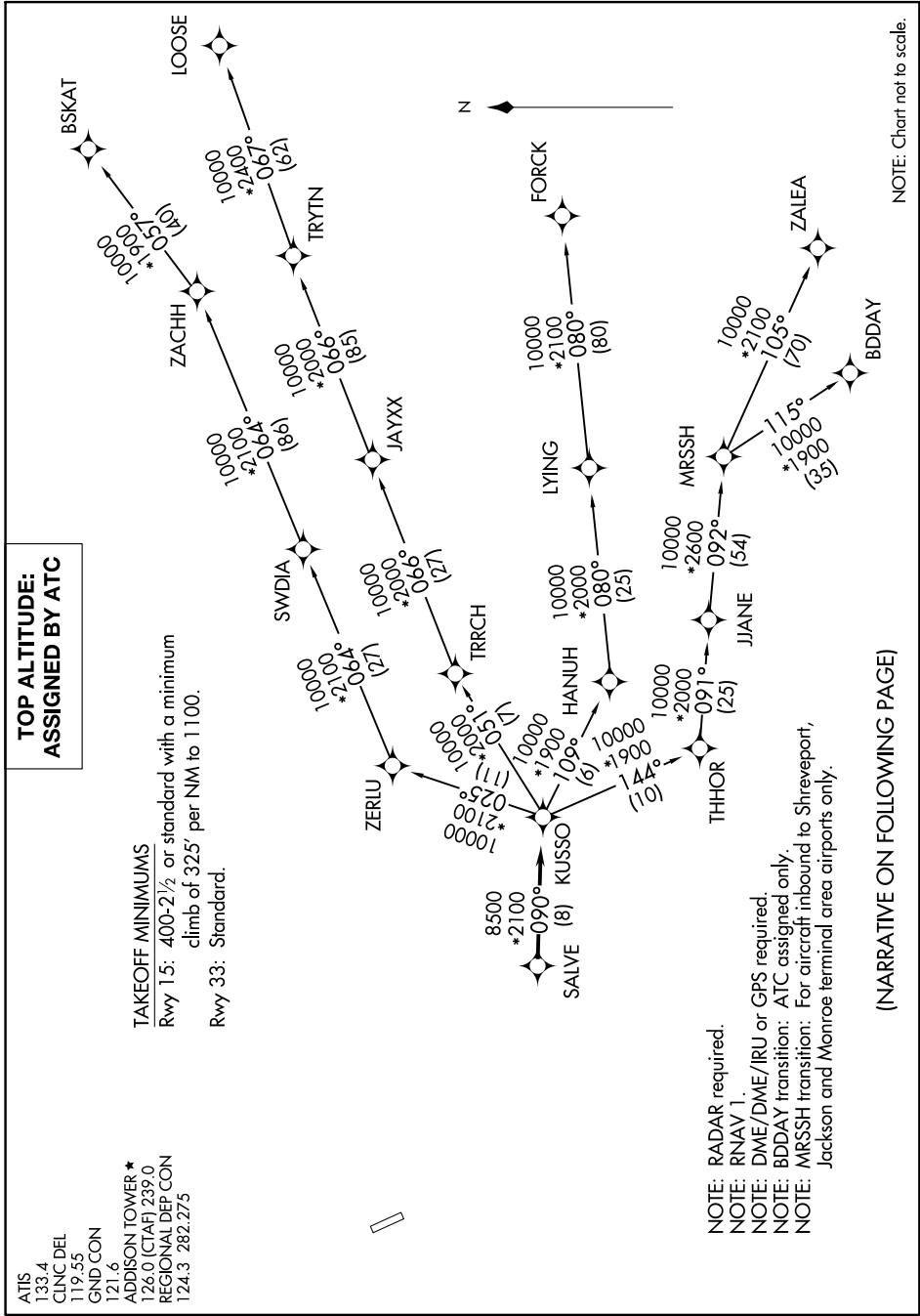
### TAKEOFF MINIMUMS

Rwy 15: 400-2½ or standard with a minimum climb of 325' per NM to 1100.  
Rwy 33: Standard.

ATIS 133.4  
CLNC DEL 119.55  
GND CON 121.6  
ADDISON TOWER \* 128.0 (CTAF) 239.0  
REGIONAL DEP CON 124.3 282.275

# KUSSO SIX DEPARTURE (RNAV)

(KUSSO6.KUSSO) 30JAN20



NOTE: RADAR required.  
NOTE: RNAV 1.  
NOTE: DME/DME/IRU or GPS required.  
NOTE: BDDAY transition: ATC assigned only.  
NOTE: MRSSH transition: For aircraft inbound to Shreveport, Jackson and Monroe terminal area airports only.

(NARRATIVE ON FOLLOWING PAGE)

SC-2, 30 JAN 2020 to 27 FEB 2020