

WAAS CH <b>78323</b> <b>W30A</b>	APP CRS <b>306°</b>	Rwy Idg <b>7959</b> TDZE <b>591</b> Apt Elev <b>597</b>
--	------------------------	---

# RNAV (GPS) Y RWY 30

GARY/CHICAGO INTL (GYY)

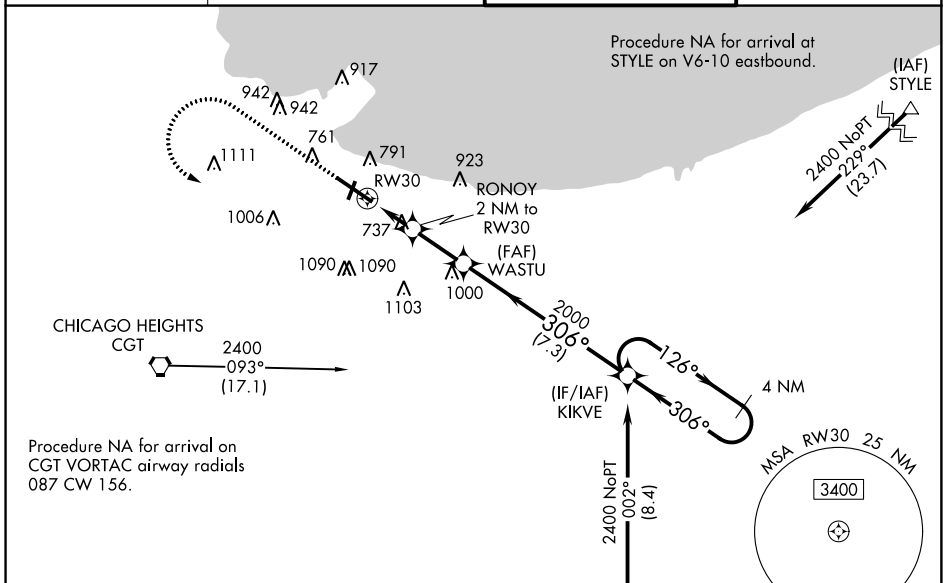
**⚠** For uncompensated Baro-VNAV systems, LNAV/VNAV NA below -16°C (4°F) or above 54°C (130°F). DME/DME RNP-0.3 NA. When local altimeter setting not received, use Chicago Midway Intl altimeter setting and increase all DA 47 feet and all MDA 60 feet, increase LNAV/VNAV visibility all Cats and LNAV Cats C/D visibility to RVR 5000, increase Circling Cat C/D visibility ¼ mile. Baro-VNAV and VDP NA with Chicago Midway Intl altimeter setting. \*\*RVR 1800 authorized with use of FD or AP or HUD to DA, NA when using Chicago Midway Intl altimeter setting.

MALSR

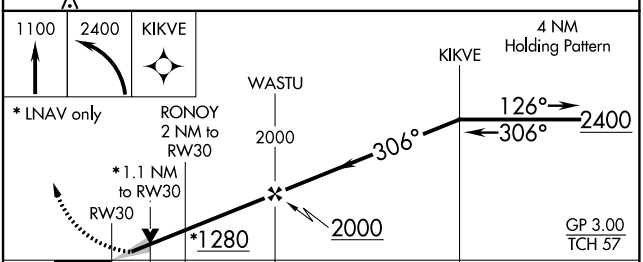
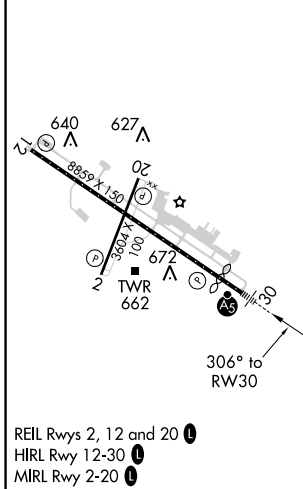


**MISSED APPROACH:**  
Climb to 1100 then climbing left turn to 2400 direct KIKVE and hold.

ATIS <b>134.575</b>	CHICAGO APP CON <b>133.1 285.6</b>	GARY TOWER * <b>125.6 (CTAF) 1</b>	GND CON <b>121.9</b>
------------------------	---------------------------------------	---------------------------------------	-------------------------



ELEV 597	<b>D</b>	TDZE 591
----------	----------	----------



CATEGORY	A	B	C	D
LPV DA	** 791/24 200 (200-½)			
LNAV/VNAV DA	991/45 400 (400-¾)			
LNAV MDA	1000/24	409 (500-½)	1000/40	409 (500-¾)
<b>C</b> CIRCLING	1140-1 543 (600-1)	1180-1 583 (600-1)	1400-2¼ 803 (900-2¼)	1420-2¾ 823 (900-2¾)

GARY, INDIANA  
Amdt 1B 01FEB18

41°37'N-87°25'W

# RNAV (GPS) Y RWY 30

EC-2, 30 JAN 2020 to 27 FEB 2020

EC-2, 30 JAN 2020 to 27 FEB 2020