

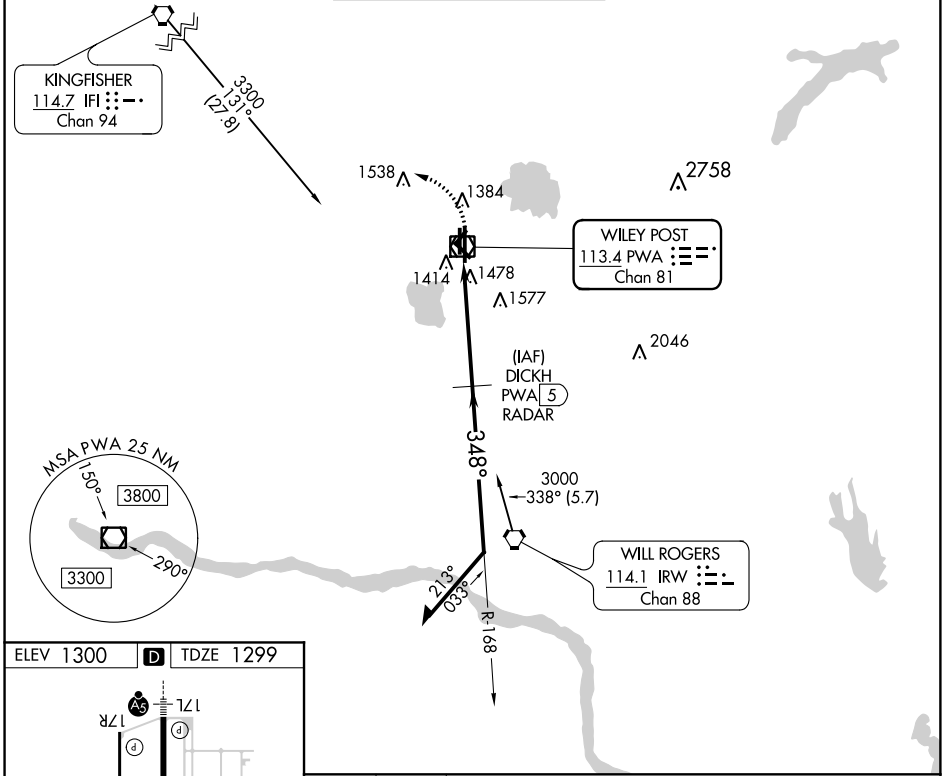
VOR/DME PWA <b>113.4</b> Chan <b>81</b>	APP CRS <b>348°</b>	Rwy Idg TDZE Apt Elev	<b>6844</b> <b>1299</b> <b>1300</b>
---	------------------------	-----------------------------	---

# VOR RWY 35R

WILEY POST (PWA)

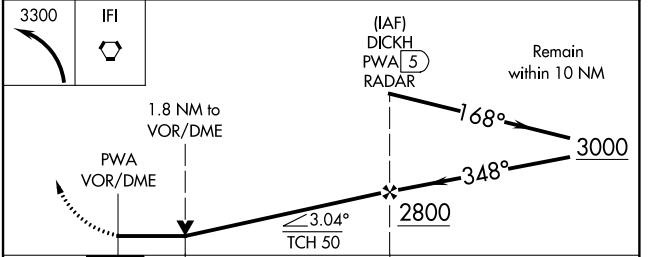
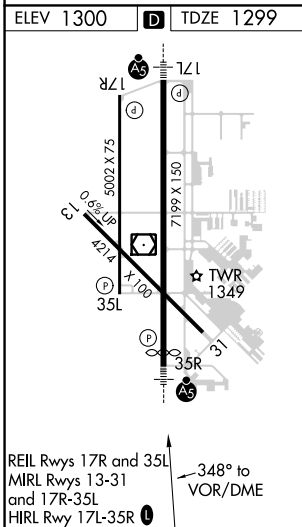
ASR RADAR or DME required. Inop table does not apply.	MALS R AS	MISSED APPROACH: Climbing left turn to 3300 direct IFI VORTAC.
--	--------------	--

ATIS <b>128.725</b>	OKE CITY APP CON <b>124.6 266.8</b>	WILEY POST TOWER ★ <b>126.9</b> (CTAF) <b>306.9</b>	GND CON <b>121.7</b>	UNICOM <b>122.95</b>
------------------------	--	--	-------------------------	-------------------------



SC-1, 30 JAN 2020 to 27 FEB 2020

SC-1, 30 JAN 2020 to 27 FEB 2020



CATEGORY	A	B	C	D
S-35R	1740-1 441 (500-1)		1740-1½ 441 (500-1½)	1740-1½ 441 (500-1½)
<b>C</b> CIRCLING	1780-1 480 (500-1)		1880-1½ 580 (600-1½)	1880-2 580 (600-2)