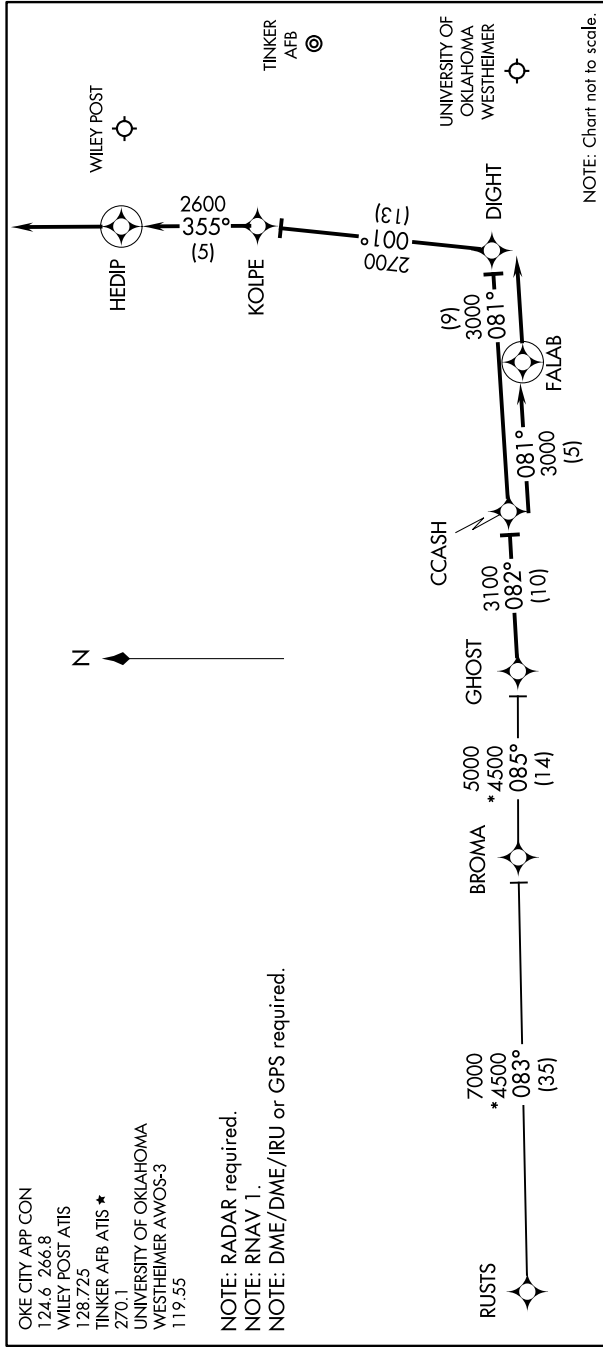


# CCASH ONE ARRIVAL (RNAV)

OKLAHOMA CITY, OKLAHOMA

SC-1, 30 JAN 2020 to 27 FEB 2020



OKE CITY APP CON  
124.6 266.8  
WILEY POST ATIS  
128.725  
TINKER AFB ATIS \*  
270.1  
UNIVERSITY OF OKLAHOMA  
WESTHEIMER AWOS-3  
119.55

NOTE: RADAR required.  
NOTE: RNAV 1.  
NOTE: DME/DME/IRU or GPS required.

## ARRIVAL ROUTE DESCRIPTION

BROMA TRANSITION (BROMA.CCASH1):  
RUSTS TRANSITION (RUSTS.CCASH1):

From GHOST on track 082° to CCASH.

LANDING OUN/TIK: From CCASH on track 081° to FALAB, then on track 081°. Expect radar vectors to final approach course.

LANDING PWA RW17L: From CCASH on track 081° to DIGHT, then on track 001° to KOIPE, then on track 355° to HEDIP, then on track 355°. Expect radar vectors to final approach course.

LANDING PWA RW35R: From CCASH on track 081° to FALAB, then on track 081°. Expect radar vectors to final approach course.

# CCASH ONE ARRIVAL (RNAV)

OKLAHOMA CITY, OKLAHOMA

SC-1, 30 JAN 2020 to 27 FEB 2020